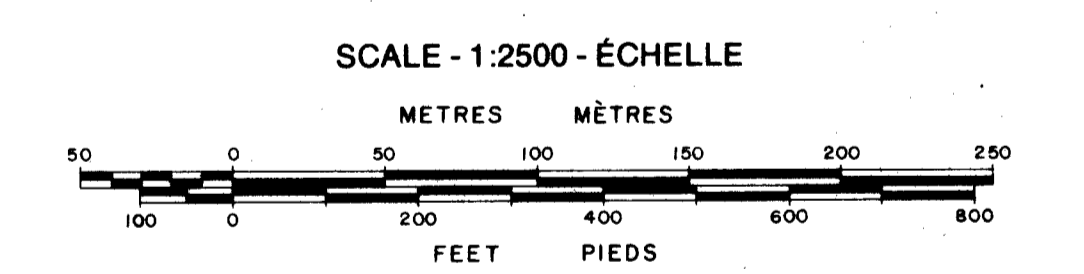


LEGEND — LÉGENDE

| | | |
|---|----------------|--|
| Control: integrated monument second order, third order | △ 247 | Contrôle monument deuxième ordre, troisième ordre |
| vertical point | ○ 248-12 | point vertical |
| Spot elevation, water elevation | EL 277.5 | Point coté, élévation d'eau |
| Photo centre | ⊕ 71 | Centre de photo |
| Railway, siding | — | Chemin de fer et voie de service |
| Building | □ | Bâtiment |
| Building under construction, ruin | □ (dashed) | Bâtiment en construction, ruine |
| Road: paved, with overhead sign | — (solid) | Route pavée, avec panneau suspendu |
| unpaved | — (dashed) | non-pavée |
| under construction | — (dotted) | en construction |
| Bridge, foot bridge, culvert | — (with arch) | Pont, passerelle, ponceau |
| Service road, service lane | — (dashed) | Voie de service, rue latérale |
| Parking area: paved, unpaved | □ (with lines) | Stationnement, pavé, non-pavé |
| Sidewalk, footpath, gate | — (with lines) | Trottoir, passage, barrière |
| Driveway, cart track, trail | — (with lines) | Entrée, chemin de terre, sentier |
| Fence | — (with lines) | Clôture |
| Guard rail | — (with lines) | Garde-fou |
| Retaining wall | — (with lines) | Mur de soutènement |
| Antenna, hydro tower, chimney | ⊙ | Antenne, pylône, cheminée |
| Utility pole, light standard | ⊙ | Poteau d'usage public, lumière |
| Power transmission line | — (with lines) | Ligne d'énergie électrique |
| Dam | — (with lines) | Barrage |
| Pit, pile | ⊙ | Sablrière, monceau |
| Quarry, cliff | — (with lines) | Carrière, falaise |
| Pipeline | — (with lines) | Pipe-line |
| Stream: definite | — (solid) | Ruisseau: défini |
| indefinite | — (dashed) | indéfini |
| Ditch, pool | — (with lines) | Fossé, piscine |
| Shoreline: definite, indefinite | — (with lines) | Rive: définie, indéfinie |
| Falls, rapids | — (with lines) | Chute, rapides |
| Swamp, flooded land | — (with lines) | Marécage, région inondée |
| Contour: index, intermediate, indefinite | — (with lines) | Courbe: maîtresse, intermédiaire, approximative |
| depression | — (with lines) | Courbe de cuvette |
| Wooded area | — (with lines) | Zone boisée |
| Scrub, scattered trees | — (with lines) | Broussailles, arbres dispersés |
| Hedge | — (with lines) | Halle |
| Individual tree | ⊙ | Arbre |

| | | |
|---------|---------|---------|
| 378-036 | 380-036 | 382-036 |
| 378-036 | 380-036 | 382-036 |
| 378-034 | 380-034 | 382-034 |

NATIONAL CAPITAL COMMISSION
 REGIONAL MUNICIPALITY OF OTTAWA-CARLETON
NATIONAL CAPITAL REGION - S.E. QUADRANT
RÉGION DE LA CAPITALE NATIONALE - QUART DE CERCLE S.E.
 COMMISSION DE LA CAPITALE NATIONALE
 MUNICIPALITE REGIONALE D'OTTAWA-CARLETON



CONTOUR INTERVAL 5 FEET
 ÉQUIDISTANCE DES COURBES 5 PIEDS

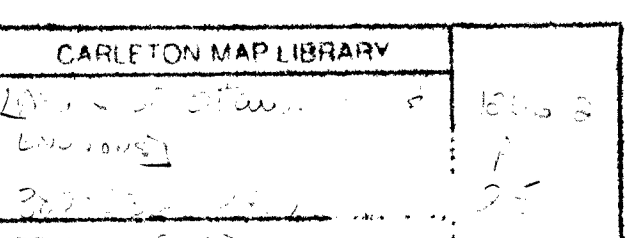
| GENERAL INFORMATION | RENSEIGNEMENTS GÉNÉRAUX |
|---|---|
| Vertical datum: Geodetic Survey of Canada | Niveau de référence: Service géodésique du Canada |
| Horizontal datum: North American (1927) | Système géodésique: Nord Américain unifié (1927) |
| Map projection: 3° Transverse Mercator | Projection: transverse de Mercator, zone 5 |
| Central Meridian: 76°30' | Méridien central: 76°30' |
| Grid spacing: 200 metres | Quadrillage de 200 mètres |
| Aerial photography: May 1976 | Photographies aériennes: Mai 1976 |

COMPILATION NOTE
 Compiled to class "A" standards which are as follows:
 Horizontal: planimetric positions of 90% of well defined features measured from this map will fall within .05 cm of true position.
 Vertical: 90% of all vertical values are accurate as follows:
 Spot heights: one third of the contour interval.
 Contours: one half of the contour interval.

PHOTOGRAMMÉTRIE
 La restitution se conforme aux normes de première classe tel que:
 Horizontal: Les positions planimétriques de 90% des détails clairement indiqués sur cette carte marqueront un écart de moins de .05 cm de la vraie position.
 Vertical: 90% des valeurs verticales se conformeront aux exigences ci-dessous:
 Points cotés: un tiers de l'intervalle des courbes de niveau.
 Courbes de niveau: une demi de l'intervalle des courbes de niveau.

| REVISIONS | |
|-----------|----------------------|
| No. | Amendment / Revision |
| | |
| | |

SHEET 380-036 **ROLL** A 24363
FEUILLE 380-036 **PHOTO** 37,39,41,43



Acc: 20,569
 2-A7