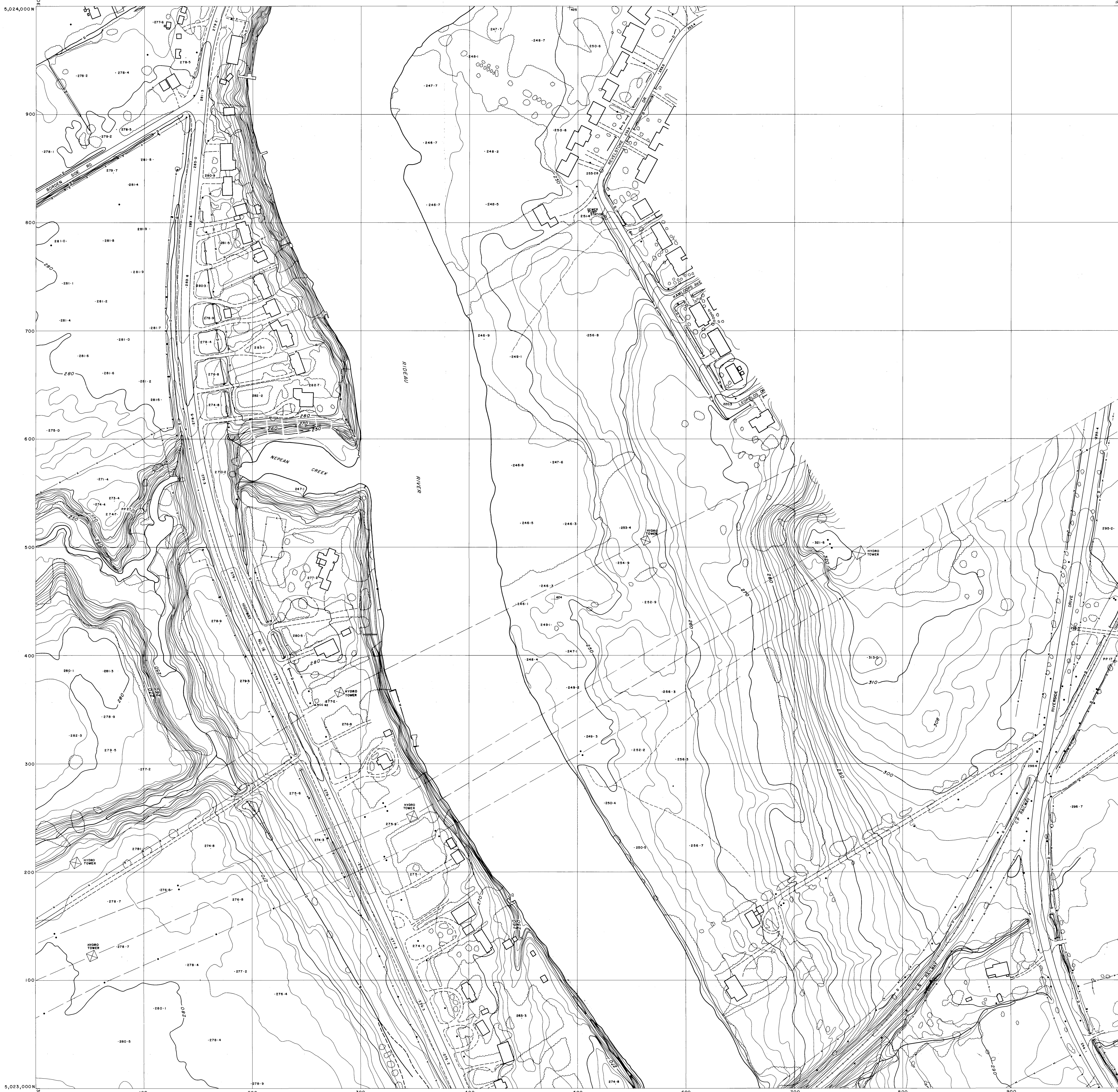


367-023-2 OLD

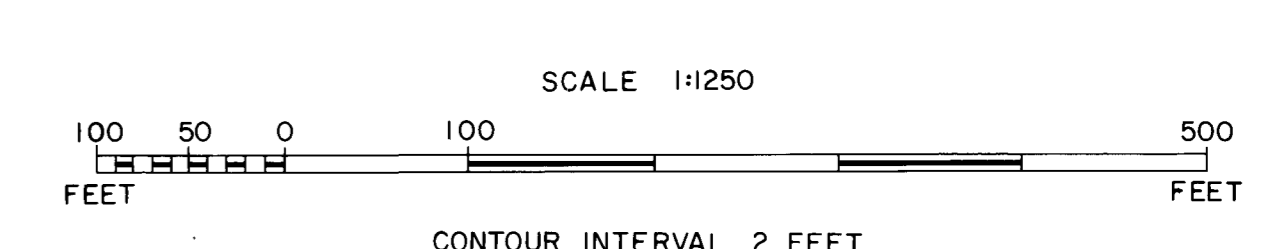


LEGEND

- Roads: paved [Symbol]
- unpaved [Symbol]
- Cart track [Symbol]
- Walkway [Symbol]
- Footpath [Symbol]
- Railway [Symbol]
- Railway, abandoned [Symbol]
- Transmission line [Symbol]
- Fence [Symbol]
- Hedge [Symbol]
- Wall [Symbol]
- Bridge: road, foot [Symbol]
- Culvert [Symbol]
- Parking: paved, unpaved [Symbol]
- Water level W/L 450.0
- Building [Symbol]
- Building (under construction) [Symbol]
- Cemetery [Symbol]
- Horizontal/Vertical control point 1102.6 @ 295.70
- Spot height 562.5
- Bench mark BM 257
- Pole [Symbol]
- Hydro tower [Symbol]
- Pit [Symbol]
- Quarry [Symbol]
- River [Symbol]
- Rapids [Symbol]
- Falls [Symbol]
- Dam [Symbol]
- Locks [Symbol]
- Perennial stream [Symbol]
- Intermittent stream [Symbol]
- Perennial lake [Symbol]
- Intermittent lake [Symbol]
- Ditch [Symbol]
- Swamp [Symbol]
- Contours [Symbol]
- Depression contours [Symbol]
- Approximate contours [Symbol]
- Wooded area [Symbol]
- Scrub [Symbol]
- Orchard [Symbol]
- Individual tree [Symbol]
- Photo centre PP [Symbol]

366-024-2	367-024-2	368-024-2
366-023-2	367-023-2	368-023-2
366-022-2	367-022-2	368-022-2

VICTORY HILL
NATIONAL CAPITAL COMMISSION



GENERAL INFORMATION
Vertical datum: Geodetic Survey of Canada.
Horizontal datum: North American (1927).
Map projection: 3° Transverse Mercator.
Central Meridian: 76°30'.
Grid spacing: 100 metres.

COMPILATION NOTE
Compiled by Western Photogrammetry Ltd., Winnipeg, by photogrammetric methods, utilizing a Wild A-8 autograph. Air photographs taken May 12, 1969 with a Wild RC-8 camera by Capital Air Surveys Ltd., Ottawa. Vertical control and aerial triangulation by Western Photogrammetry Ltd., Horizontal ground control by National Capital Commission.

SHEET 367-023-2
ROLL 6967
PHOTOS 16,17,26,27,28

CARLETON MAP LIBRARY
SCALE 1:1250