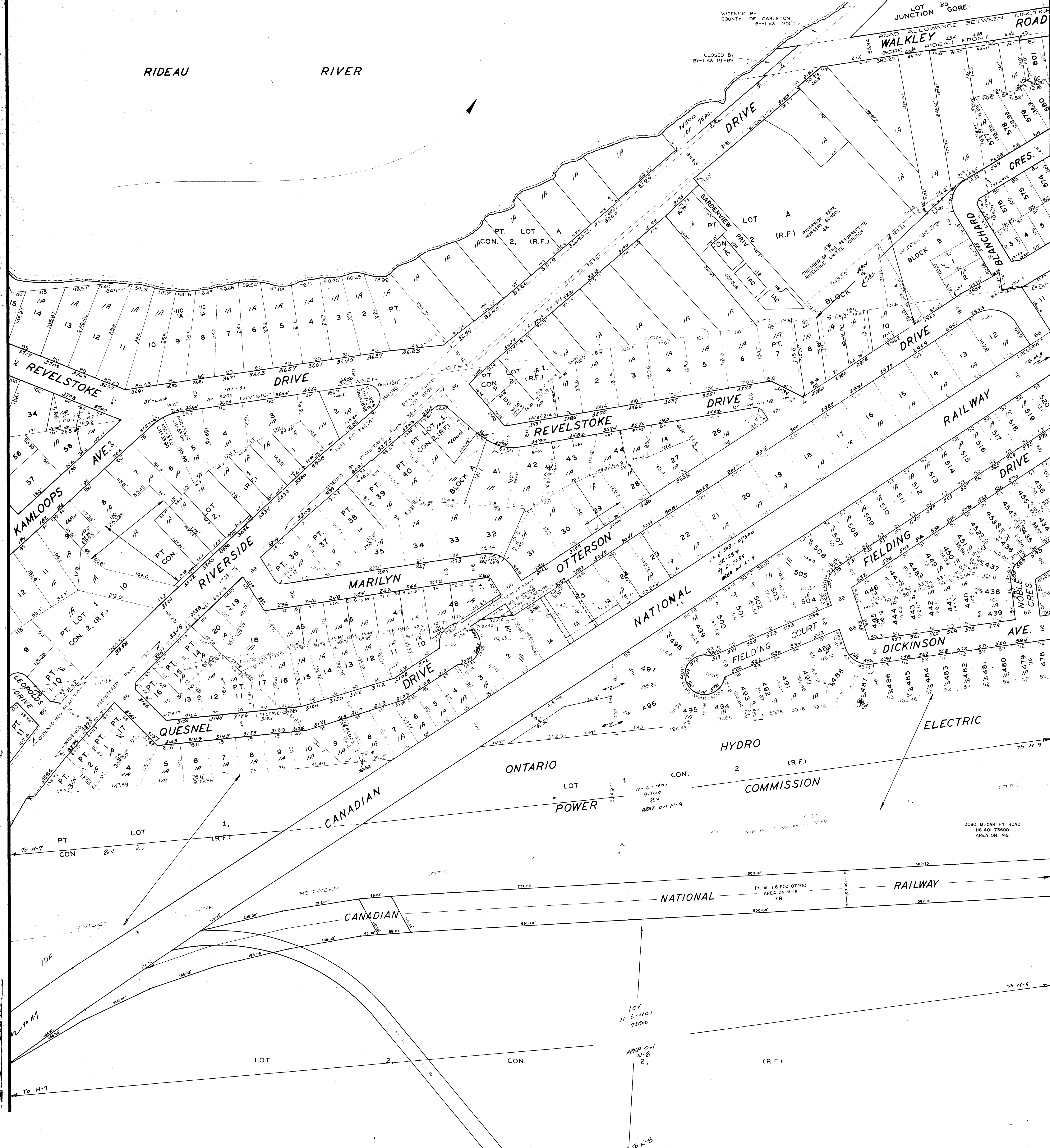


RIDEAU RIVER

WIDENING BY COUNTY OF CARLETON BY-LAW 1201

LOT JUNCTION 25 GORE ROAD ALLOWANCE BETWEEN JUNCTION WALKLEY GORE RIDEAU FRONT

CLOSED BY BY-LAW 19-82



M-8

K-7	K-8	L-A
M-7	M-8	M-9
		N-9

KEY TO ADJOINING SHEETS

SECTIONAL PLAN OF
THE CITY OF OTTAWA
 SCALE 1" = 100'

PREPARED BY THE SURVEYS AND MAPPING DIVISION OF THE
 DEPARTMENT OF PHYSICAL ENVIRONMENT
 CORPORATION OF THE CITY OF OTTAWA
 25 FEBRUARY 1977

THIS PLAN IS COMPILED FROM REGISTERED PLANS WITH THE ASSISTANCE OF A MINIMUM OF FIELD SURVEY MOST MEASUREMENTS SHOWN HEREON HAVE BEEN TAKEN FROM SUCH PLANS OR FROM DEEDS OR BY-LAWS, AND THEY ARE NOT INTENDED TO DENY THE EXISTENCE OF EITHER SURPLUS OR DEFICIENCY WHICH MAY BE FOUND UPON A MORE DETAILED SURVEY