

N. C. C.

ONTARIO

SMYTH ROAD ALLOWANCE BETWEEN LOTS 15 & 16

1106.94'

953.16'

HYDRO

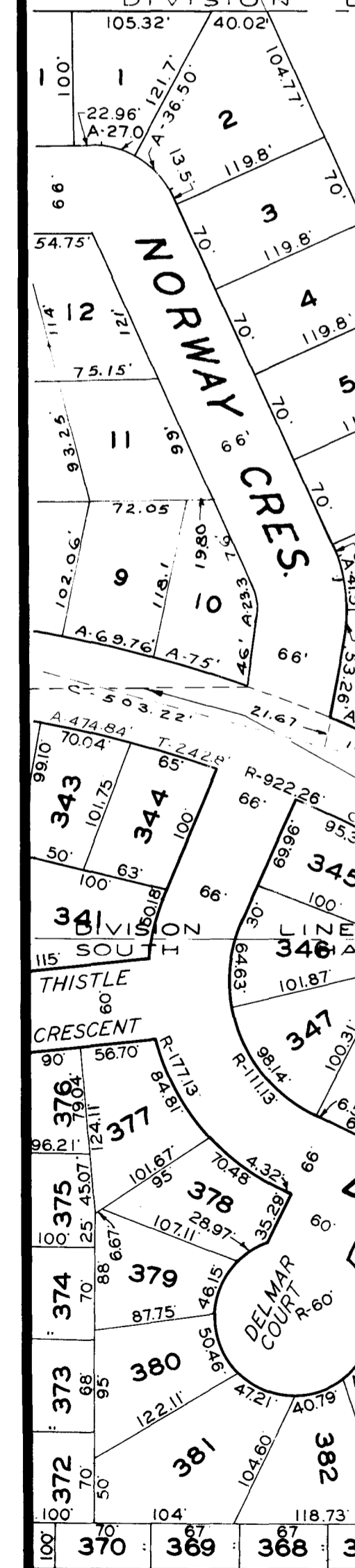
ELECTRIC

NATIONAL

CAPITAL

COMMISSION

PLEASE ASANT
LICENSE OF OCCUPATION - N.C.C. TO CITY
CITY CLERK'S No 4353



I-18

H-17	H-18	H-19
I-17	I-18	I-19
J-17	J-18	J-19

KEY TO ADJOINING SHEETS

SECTIONAL PLAN OF
THE CITY OF OTTAWA
SCALE 1" = 100'

PREPARED BY THE SURVEYS AND MAPPING DIVISION OF THE
DEPARTMENT OF PHYSICAL ENVIRONMENT
CORPORATION OF THE CITY OF OTTAWA

9 FEBRUARY 1977

REVISION DATES

THIS PLAN IS COMPILED FROM REGISTERED PLANS WITH THE ASSISTANCE OF A MINIMUM OF FIELD SURVEY MOST MEASUREMENTS SHOWN HEREON HAVE BEEN TAKEN FROM SUCH PLANS OR FROM DEEDS OR BY-LAWS, AND THEY ARE NOT INTENDED TO DENY THE EXISTENCE OF EITHER SURPLUS OR DEFICIENCY WHICH MAY BE FOUND UPON A MORE DETAILED SURVEY.

Copyright, CANADA, Serial No. 181982