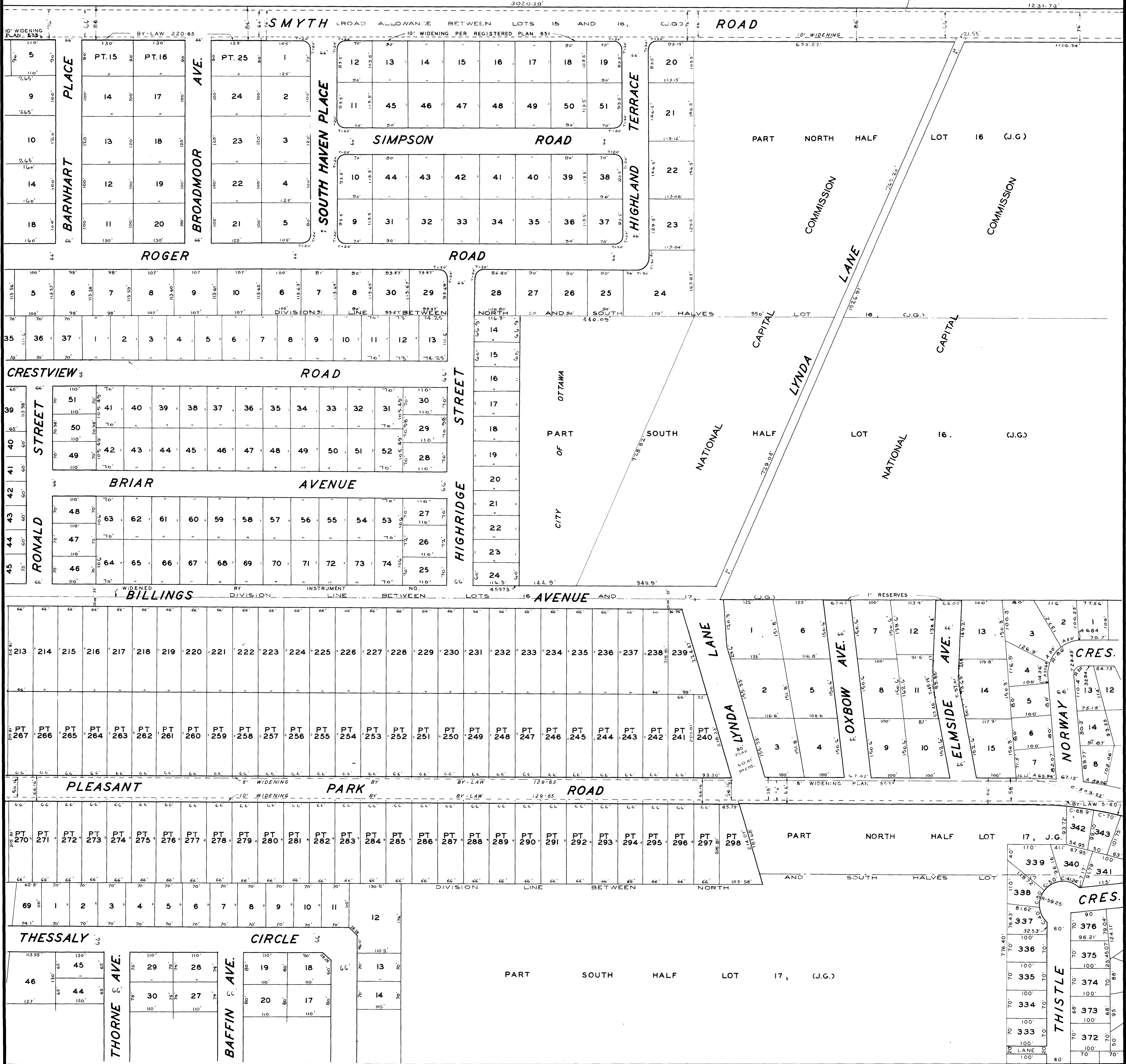


Smyth  
10-08  
10-08

SHEET I-17

PART SOUTH HALF LOT 15 (J.G.)

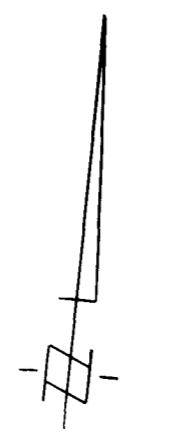
N. C. C.



I-17

H-16	H-17	H-18
I-16	I-17	I-18
J-16	J-17	J-18

KEY TO ADJOINING SHEETS



SECTIONAL PLAN OF  
**THE CITY OF OTTAWA**  
 SCALE 1" = 100'

PREPARED BY THE SURVEYS AND MAPPING DIVISION OF THE  
 DEPARTMENT OF PHYSICAL ENVIRONMENT  
 CORPORATION OF THE CITY OF OTTAWA

4 FEBRUARY 1977

REVISION DATES

THIS PLAN IS COMPILED FROM REGISTERED SURVEYS WITH THE ASSISTANCE OF A MINIMUM OF FIELD SURVEY MOST MEASUREMENTS SHOWN HEREON HAVE BEEN TAKEN FROM SUCH PLANS OR FROM DEEDS OR BY-LAWS, AND THEY ARE NOT INTENDED TO DENY THE EXISTENCE OF EITHER SURPLUS OR DEFICIENCY WHICH MAY BE FOUND UPON A MORE DETAILED SURVEY.

Copyright, CANADA, Serial No. 181982