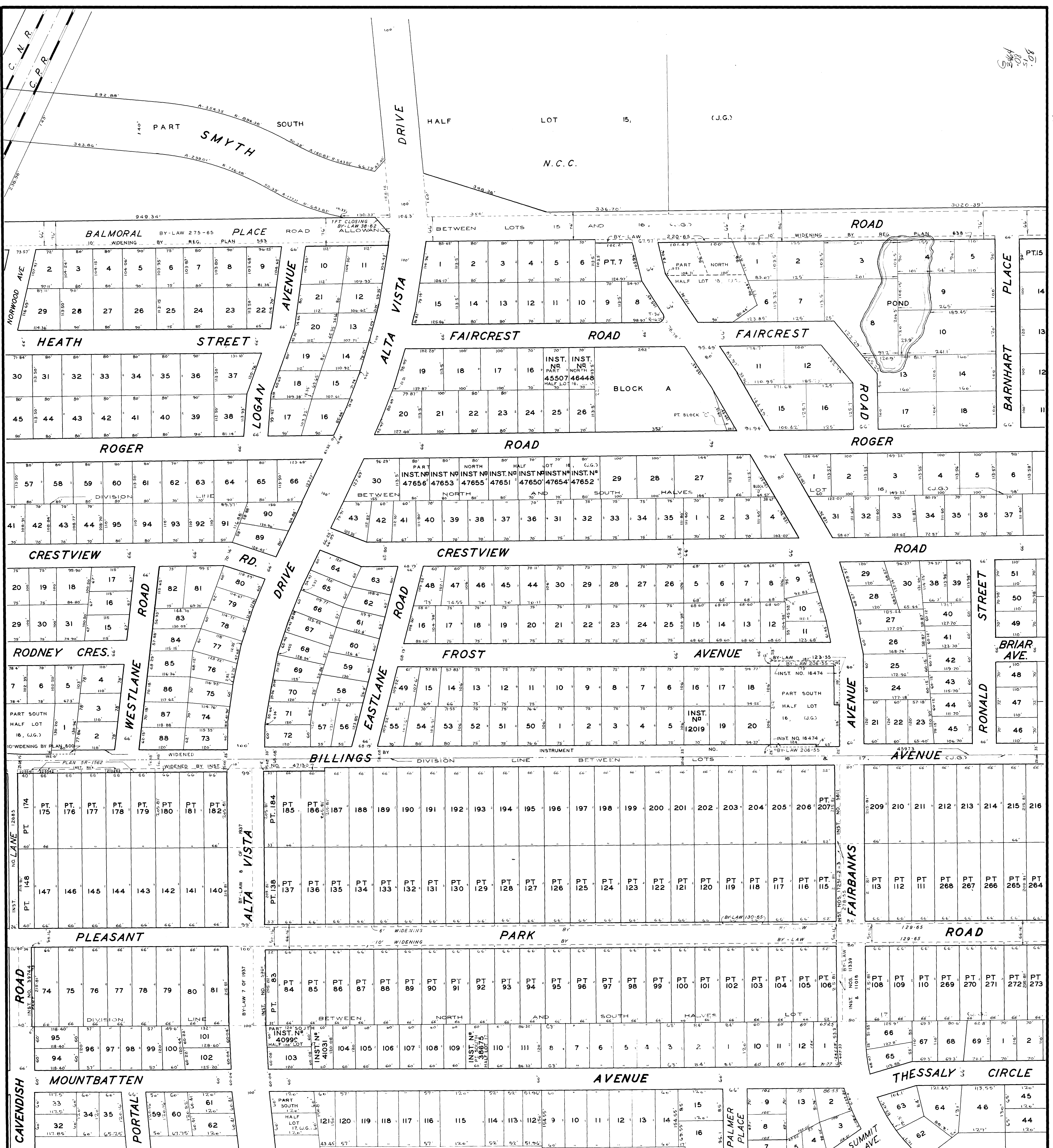
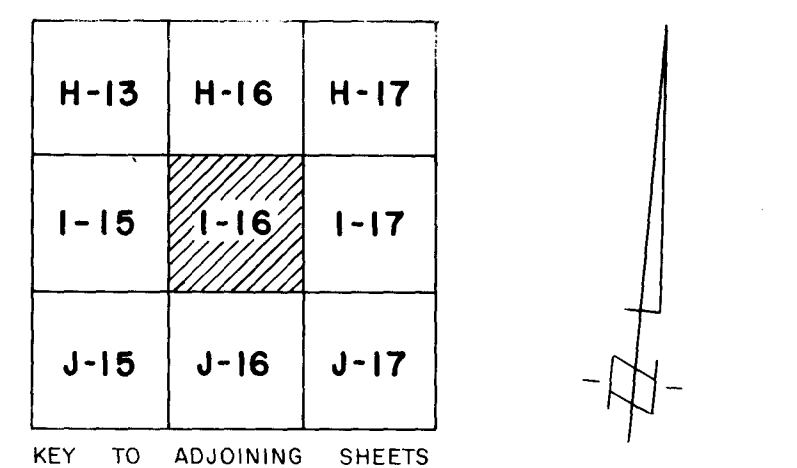


5464  
-08  
-51  
-08

SHEET I-16



I-16



SECTIONAL PLAN OF  
**THE CITY OF OTTAWA**  
 SCALE 1" = 100'  
 PREPARED BY THE SURVEYS AND MAPPING DIVISION OF THE  
 DEPARTMENT OF PHYSICAL ENVIRONMENT  
 CORPORATION OF THE CITY OF OTTAWA  
 4 FEBRUARY 1977

REVISION DATES

THIS PLAN IS COMPILED FROM REGISTERED PLANS WITH THE ASSISTANCE OF A MINIMUM OF FIELD SURVEY MOST MEASUREMENTS SHOWN HEREON HAVE BEEN TAKEN FROM SUCH PLANS OR FROM DEEDS OR BY-LAWS, AND THEY ARE NOT INTENDED TO DENY THE EXISTENCE OF EITHER SURPLUS OR DEFICIENCY WHICH MAY BE FOUND UPON A MORE DETAILED SURVEY.