

PT. LOT 19
CON. 2, (O.F.)

PT. LOT 20
CON. 2, (O.F.)

QUEENSWAY

(FORMER C.N.R. RIGHT-OF-WAY)

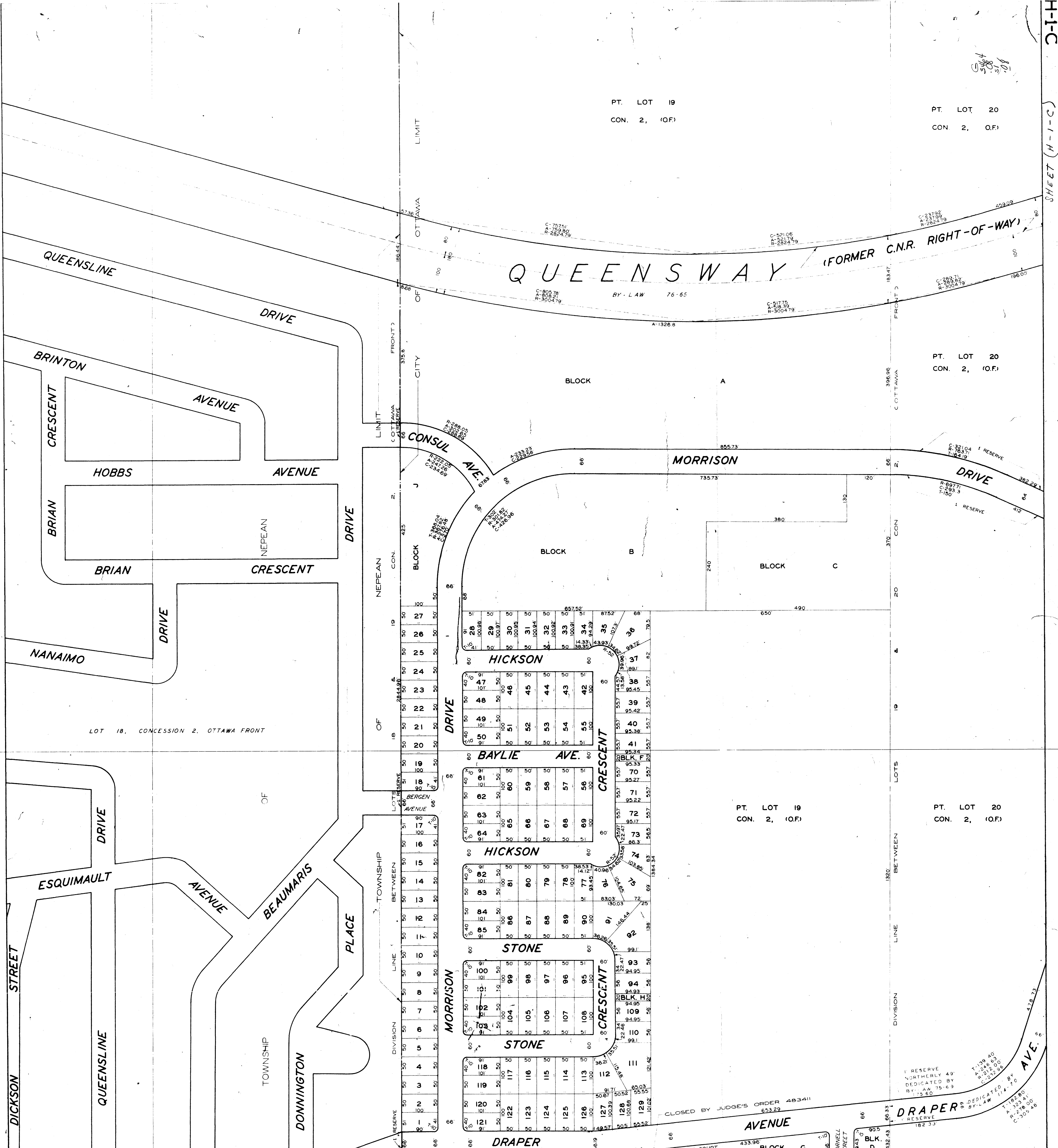
BY-LAW 76-65

PT. LOT 20
CON. 2, (O.F.)

PT. LOT 20
CON. 2, (O.F.)

PT. LOT 19
CON. 2, (O.F.)

PT. LOT 20
CON. 2, (O.F.)



CORPORATION OF THE CITY OF OTTAWA
ENGINEERING DEPARTMENT - LEGAL SURVEYS BRANCH

SHEET H-1-C

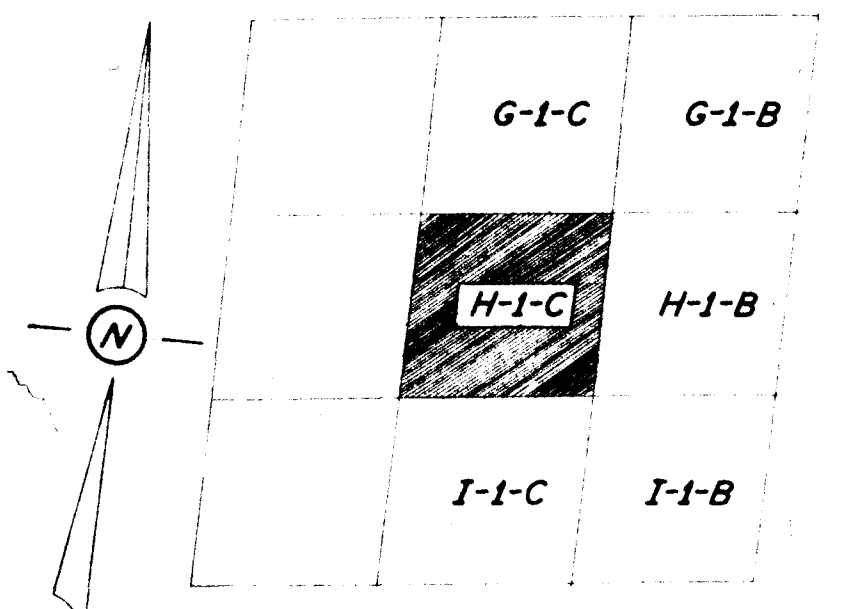
SCALE — 1" = 100'

COPYRIGHT, CANADA, SERIAL NO. 181982

THIS PLAN IS COMPILED FROM REGISTERED PLANS WITH THE ASSISTANCE OF A MINIMUM OF FIELD SURVEY MOST MEASUREMENTS SHOWN HEREON HAVE BEEN TAKEN FROM SUCH PLANS OR FROM DEEDS OR BY-LAWS AND THEY ARE NOT INTENDED TO DENY THE EXISTENCE OF EITHER SURPLUS OR DEFICIENCY WHICH MAY BE FOUND UPON A MORE DETAILED SURVEY.

FLOTTED BY - J.L.B.
TRACED BY - L.B.S.
CHECKED BY - P.A.H.
APPROVED BY - F.E. AYERS P. ENG.
DATE - 2 MAR 65
CITY SURVEYOR

8 MAY 70



KEY TO ADJOINING SHEETS