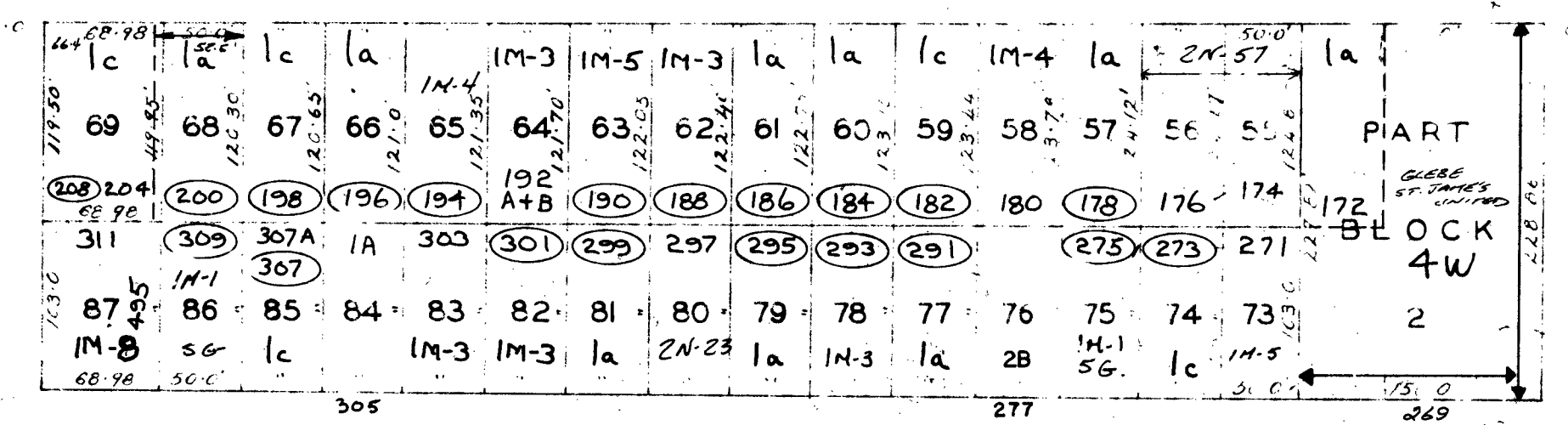
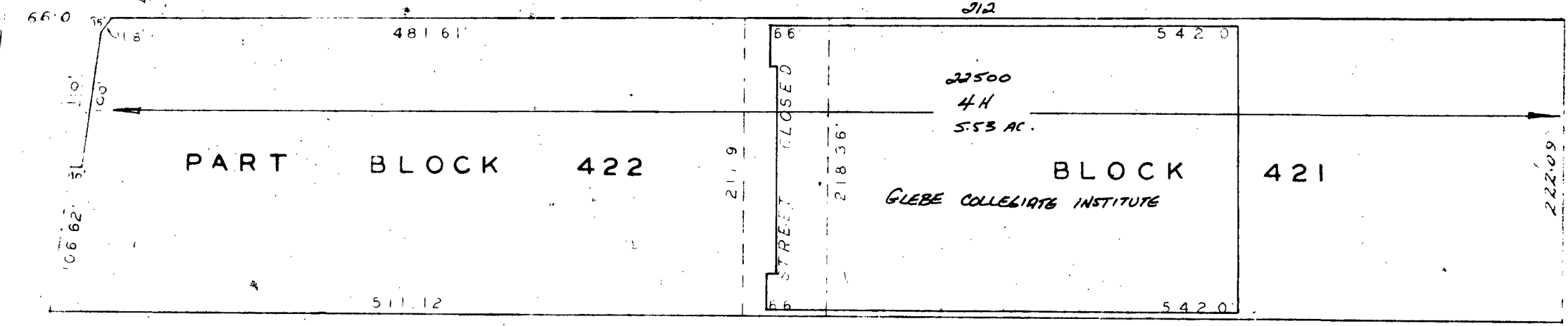


CARLING AVE.

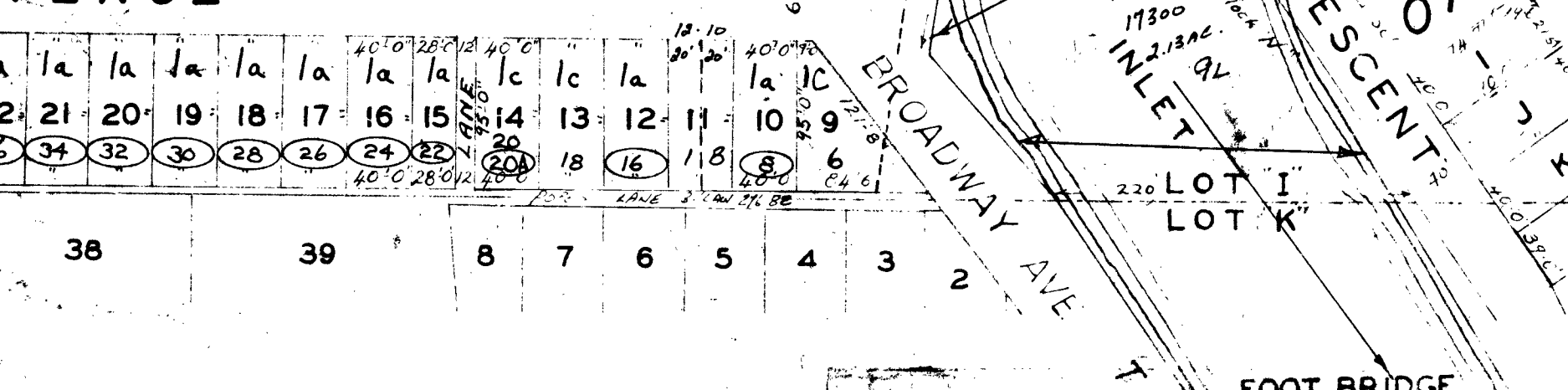
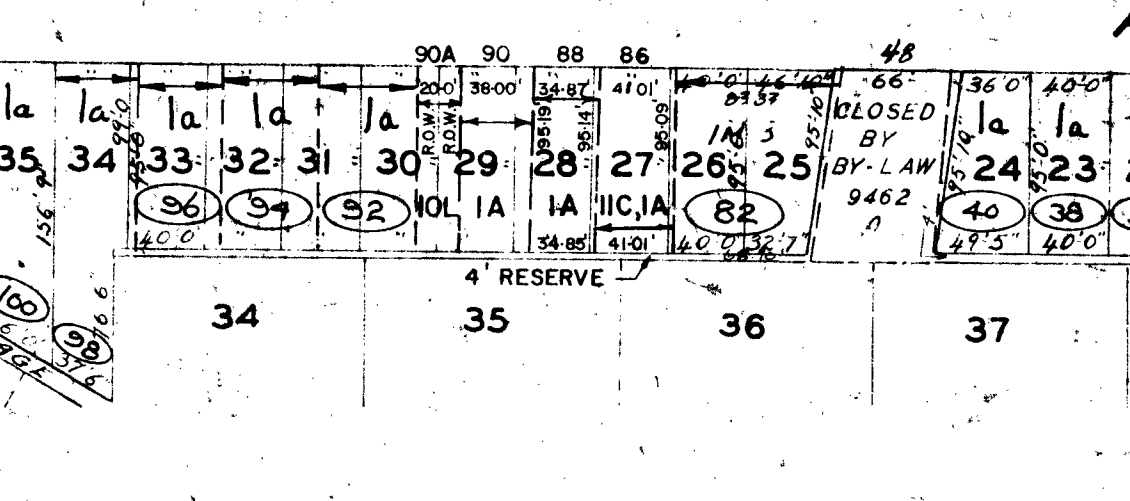
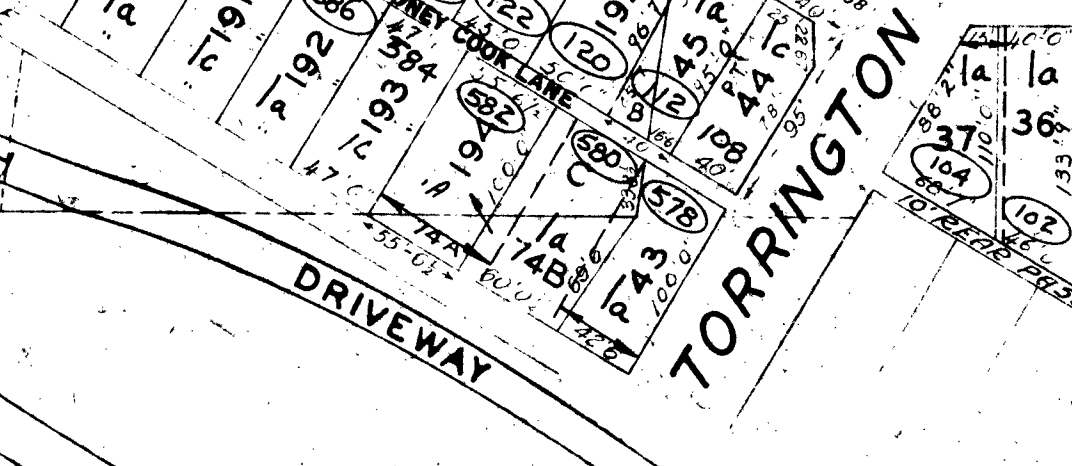
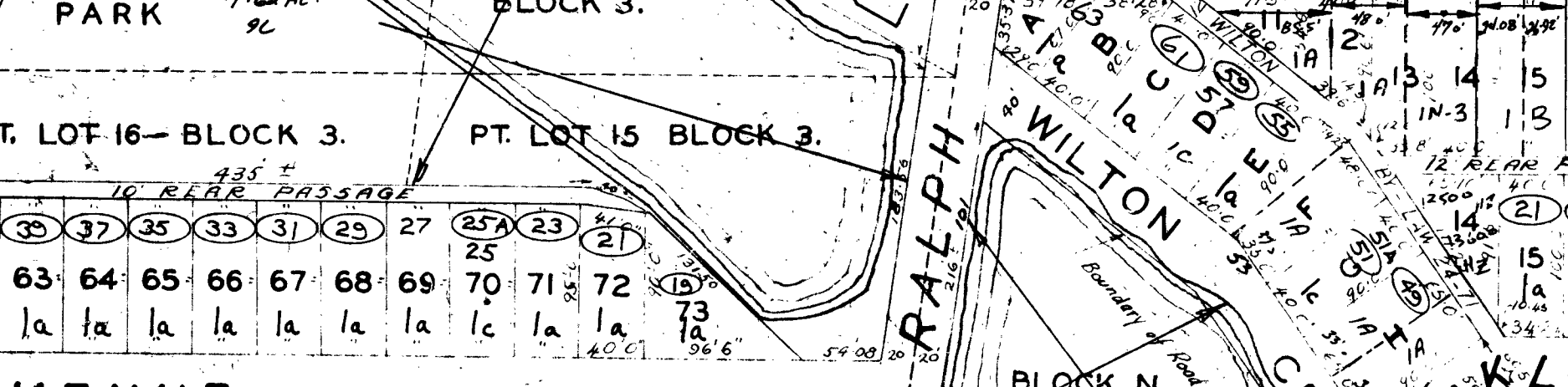
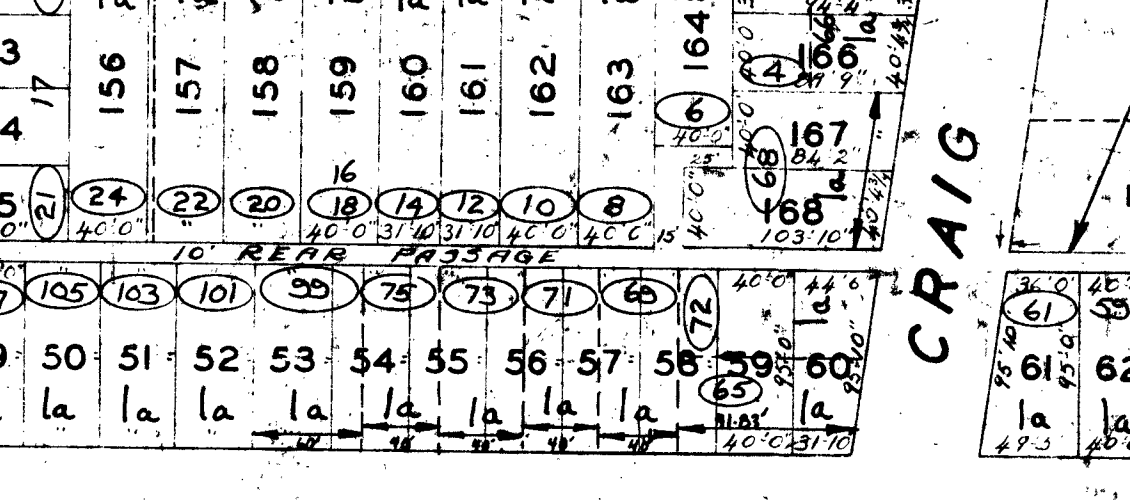
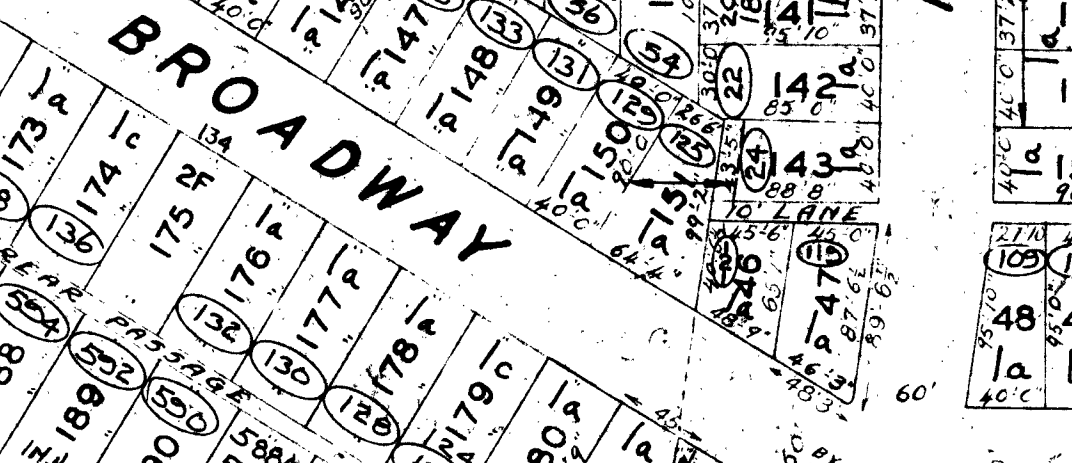
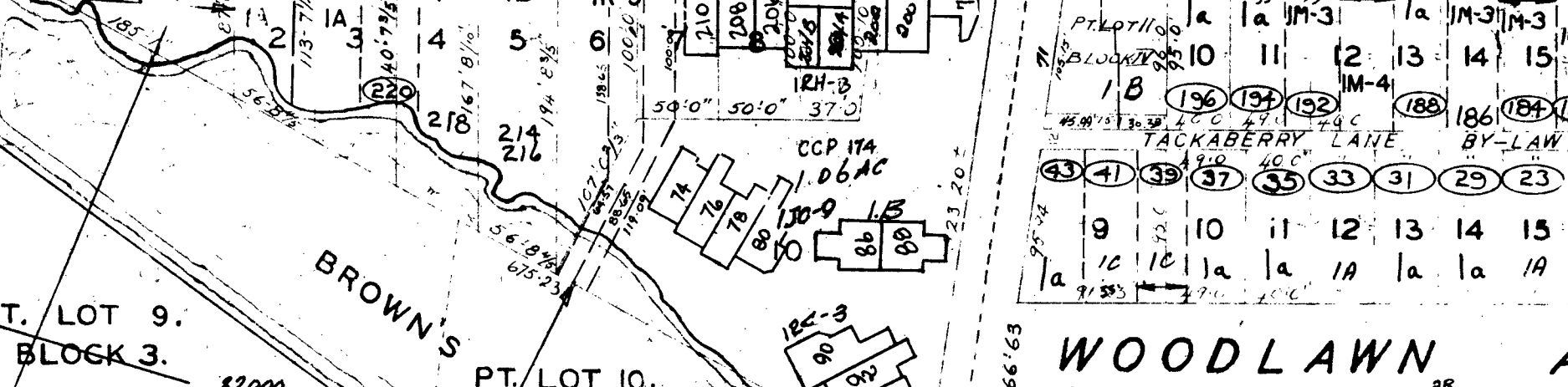
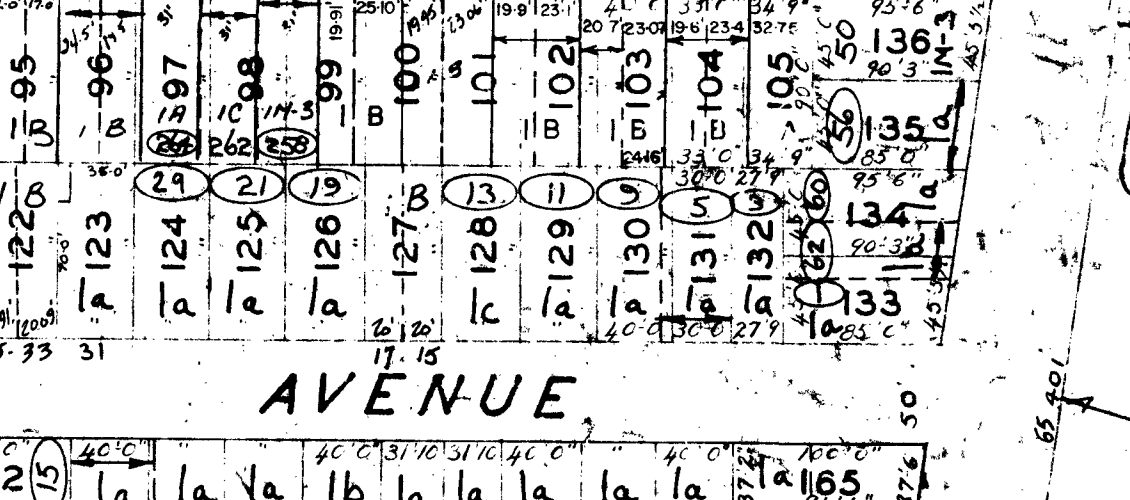
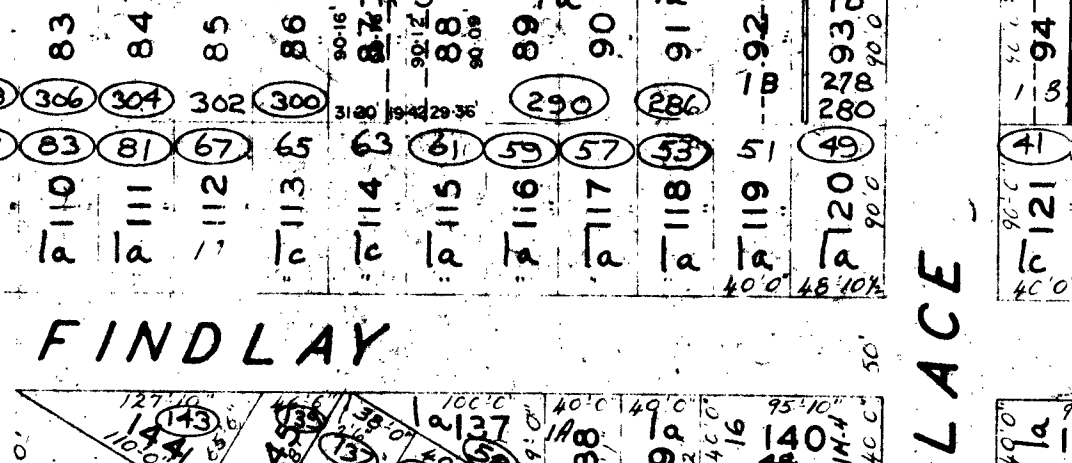
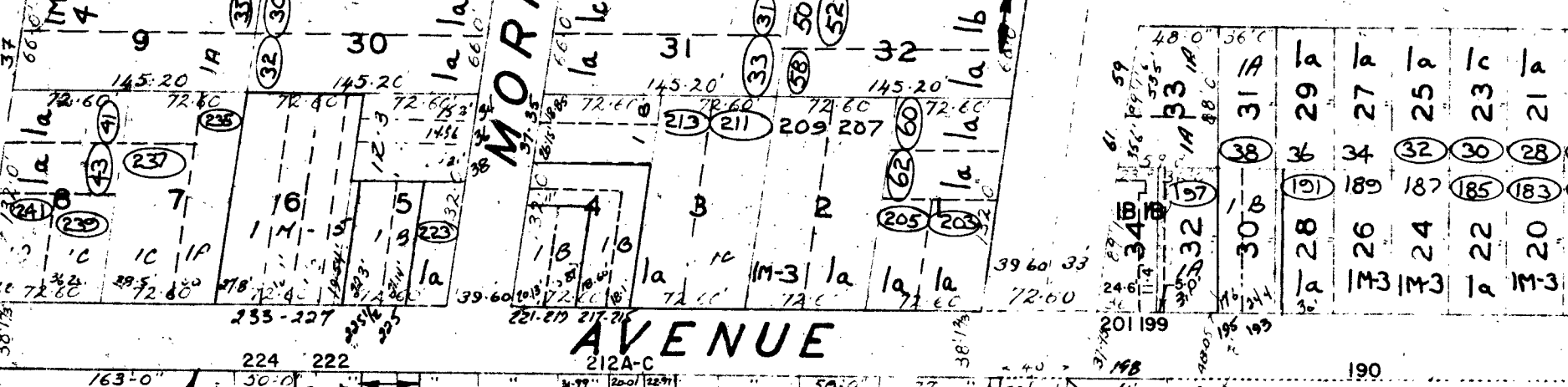
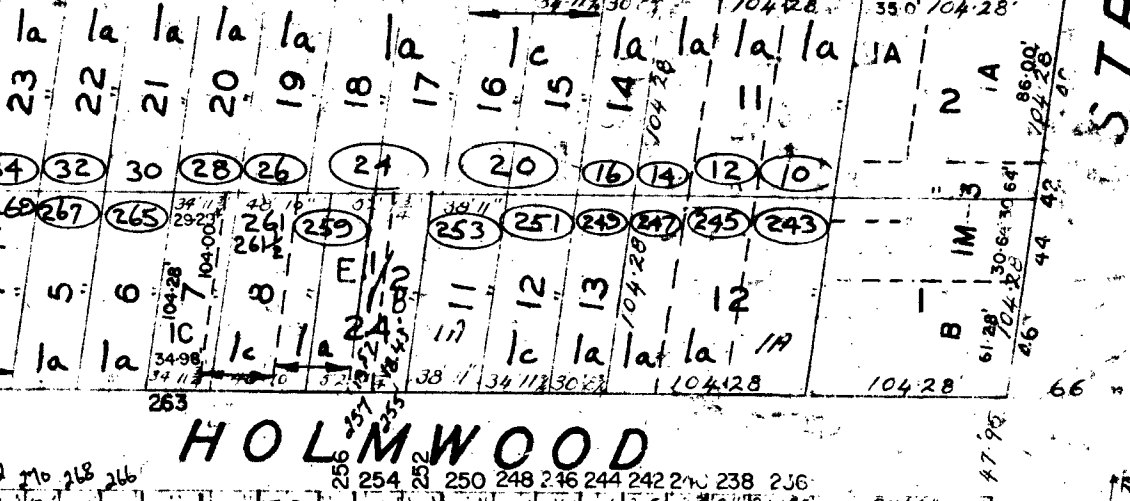
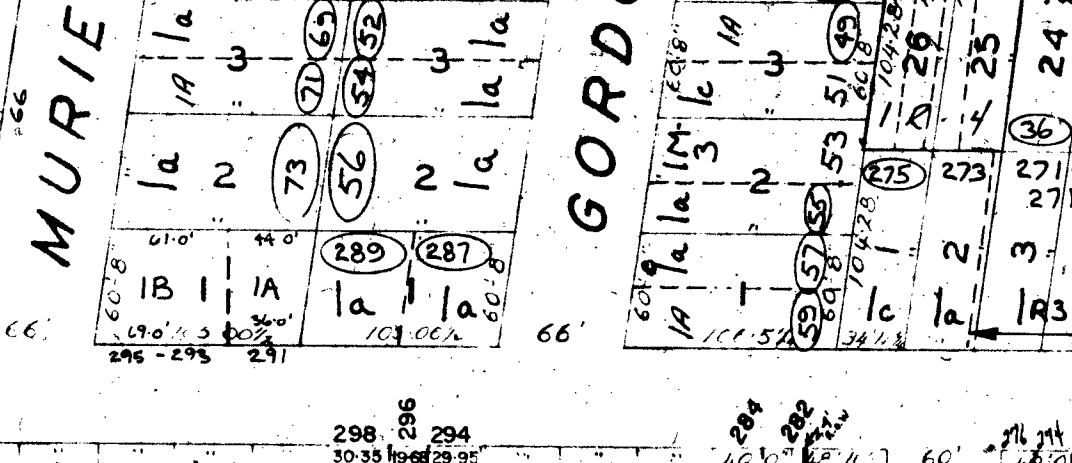
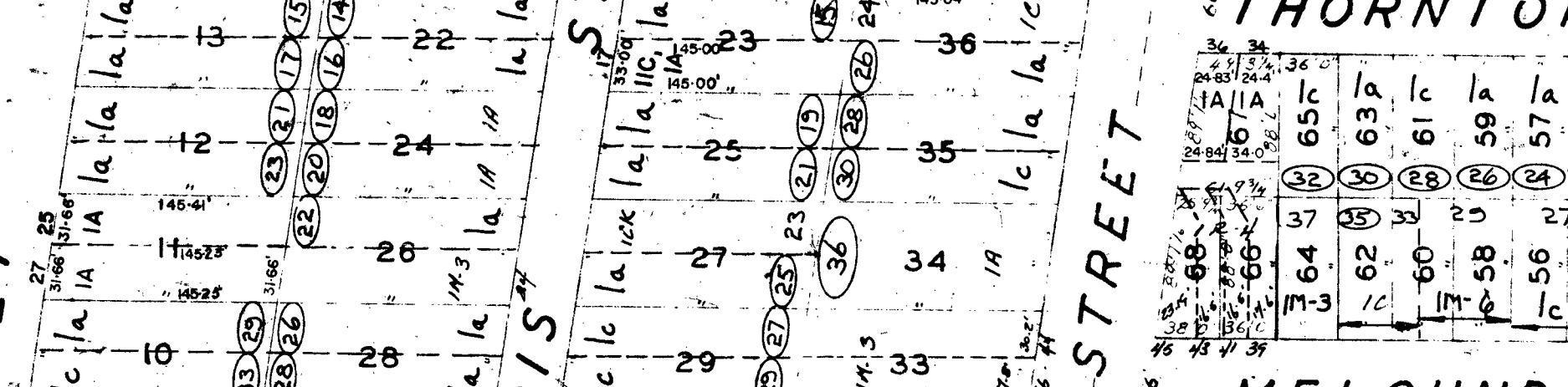
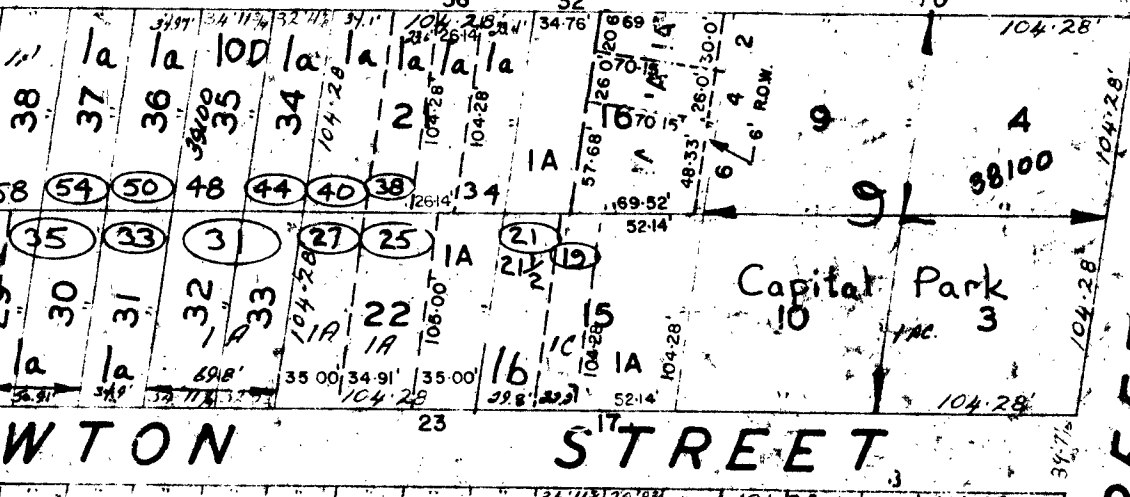
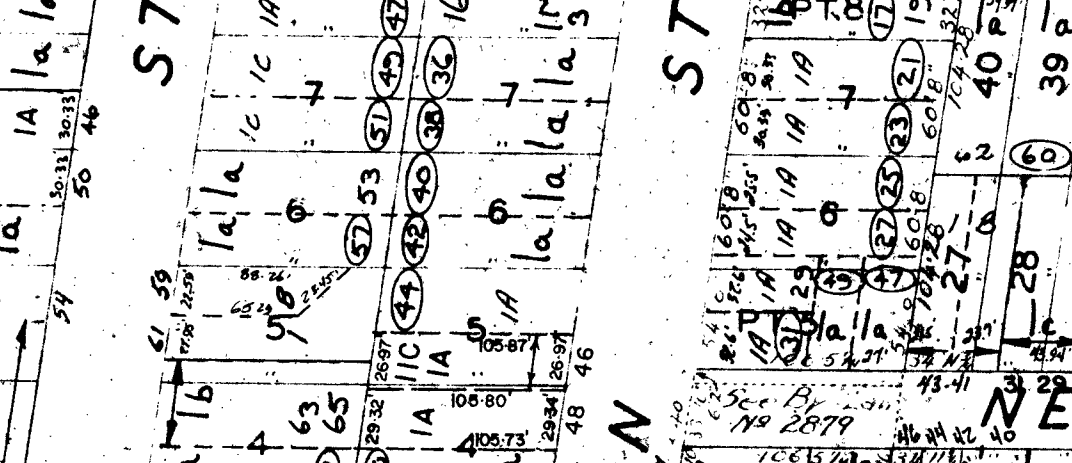
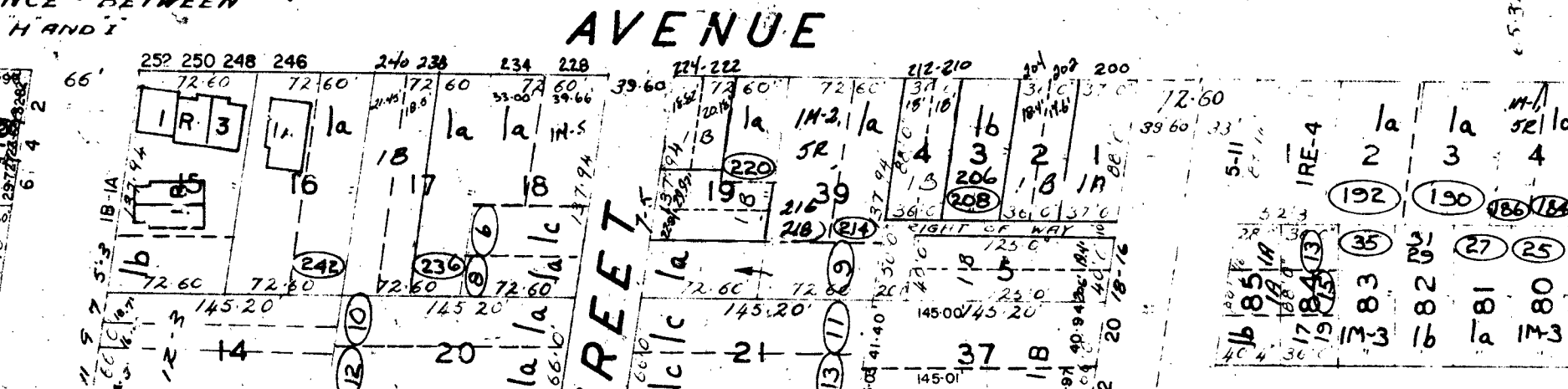
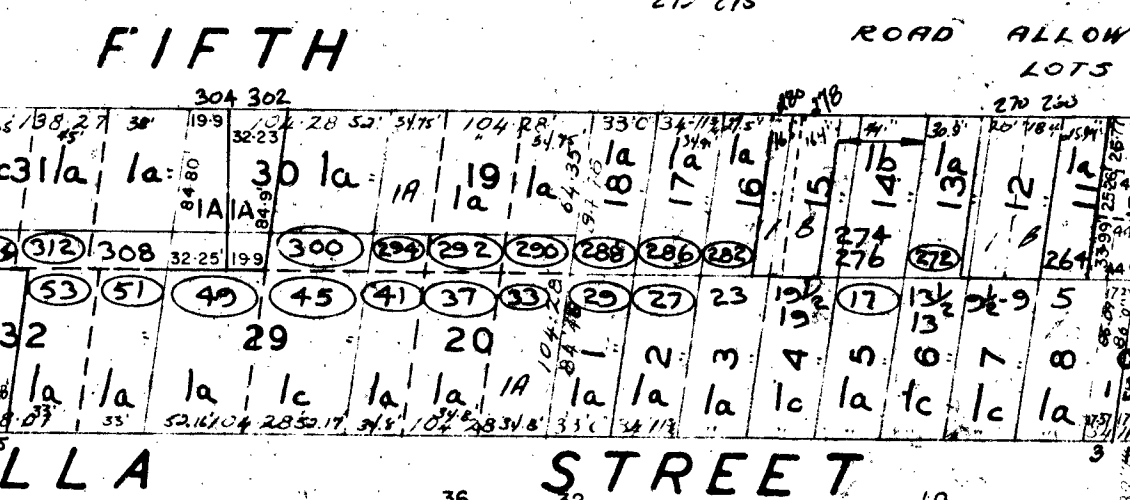
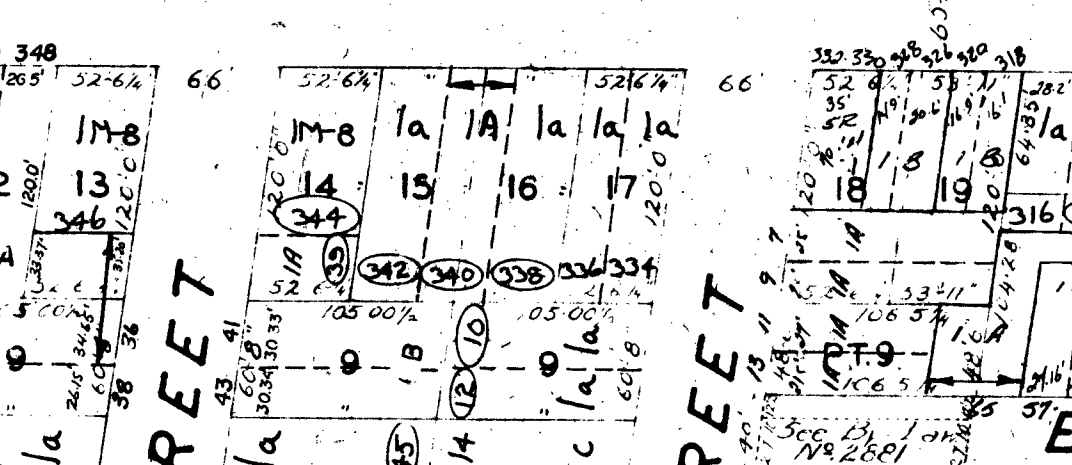
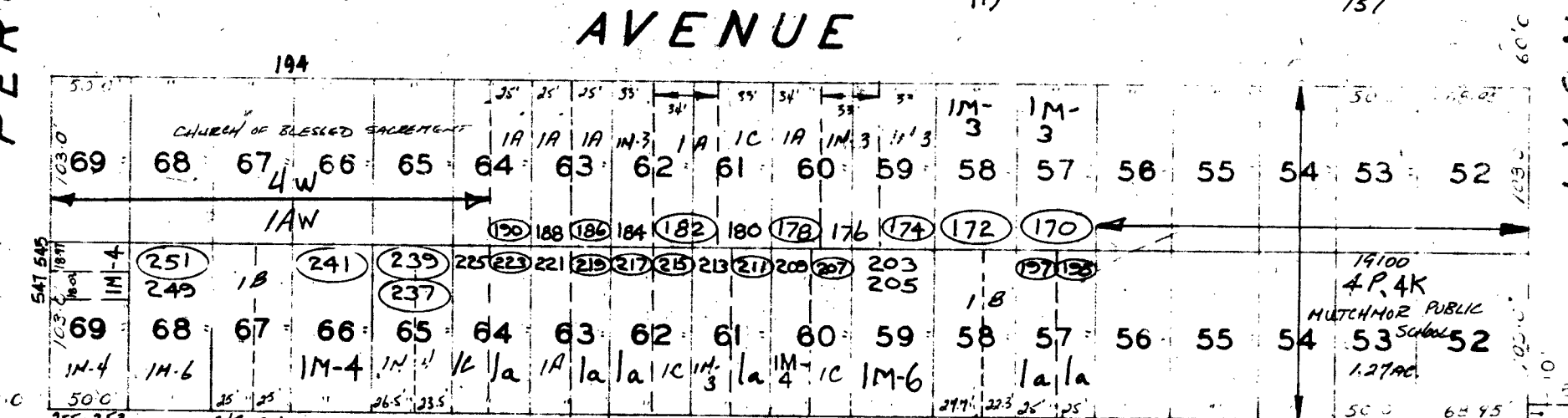
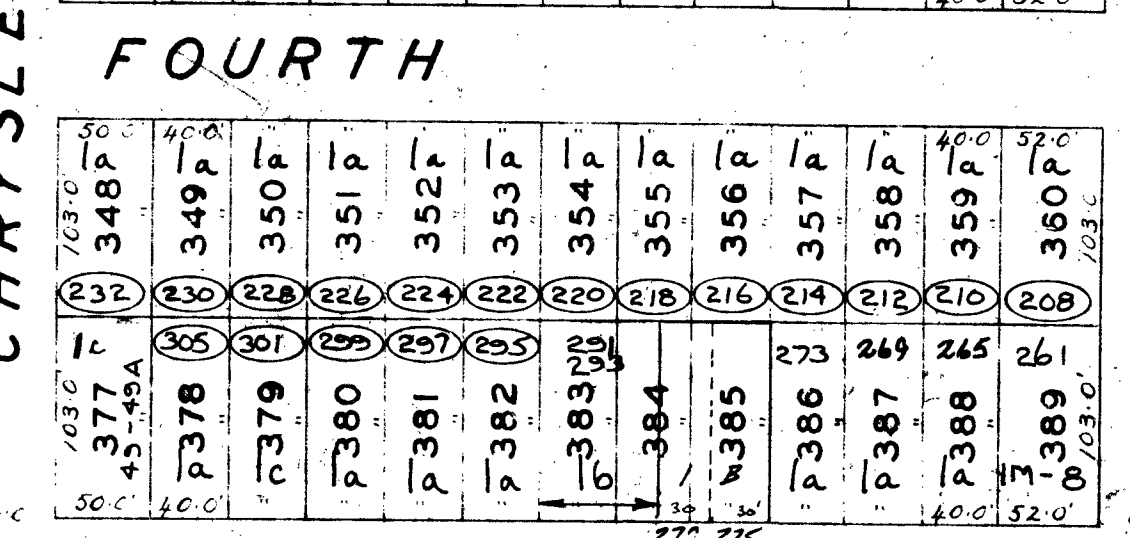
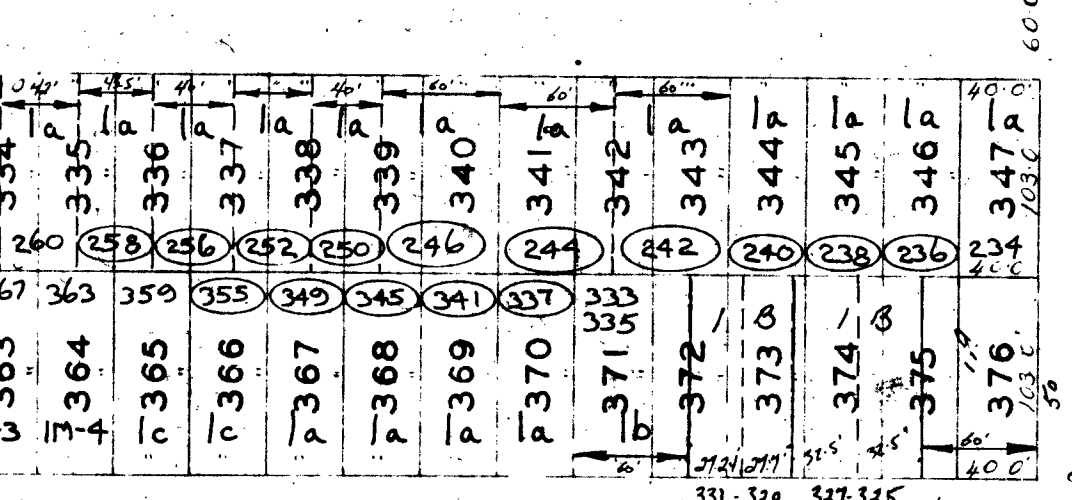
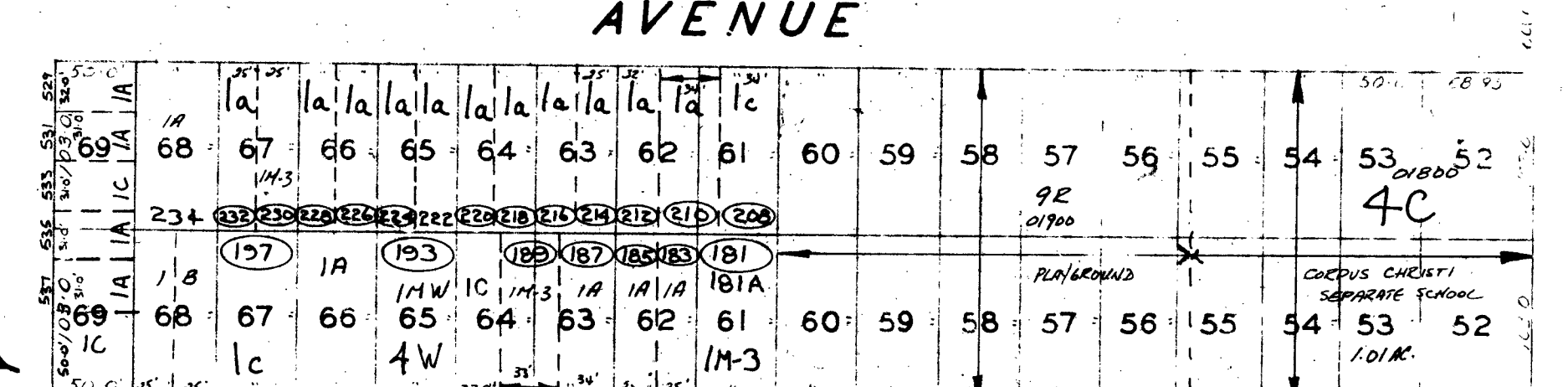
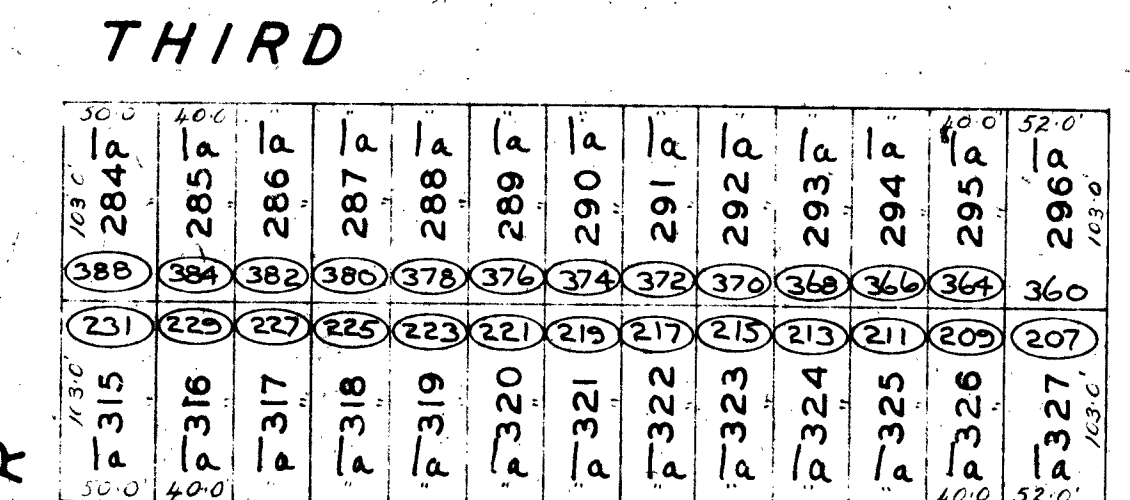
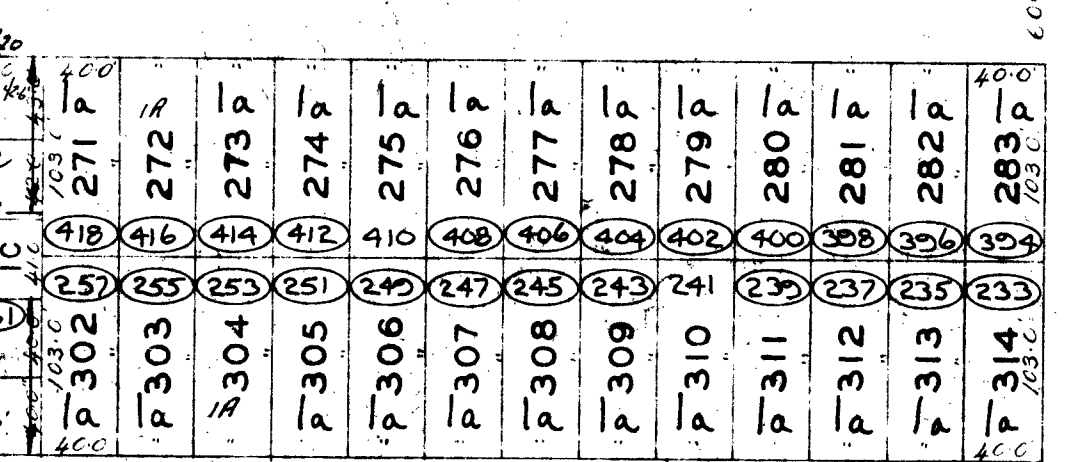
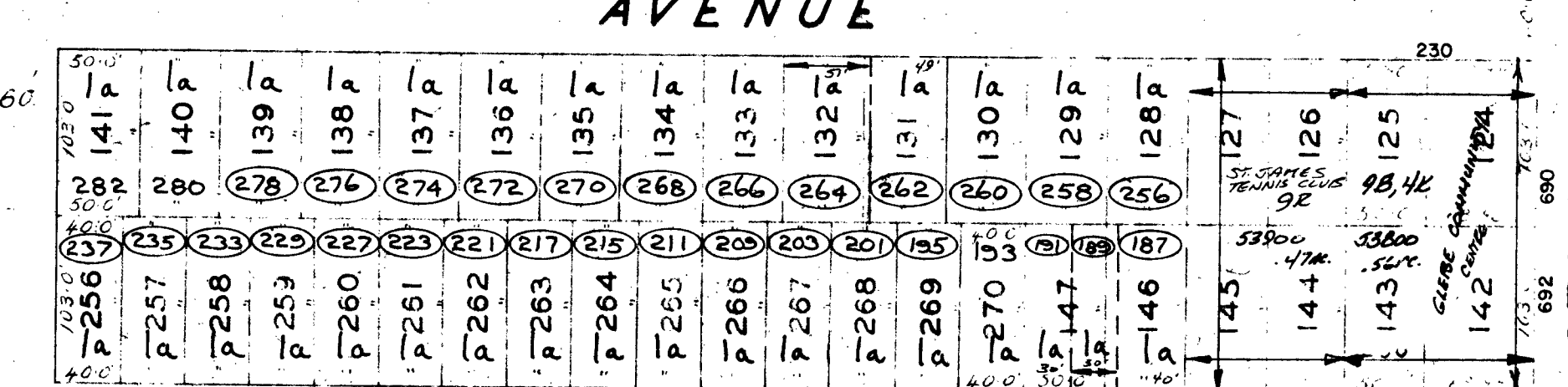
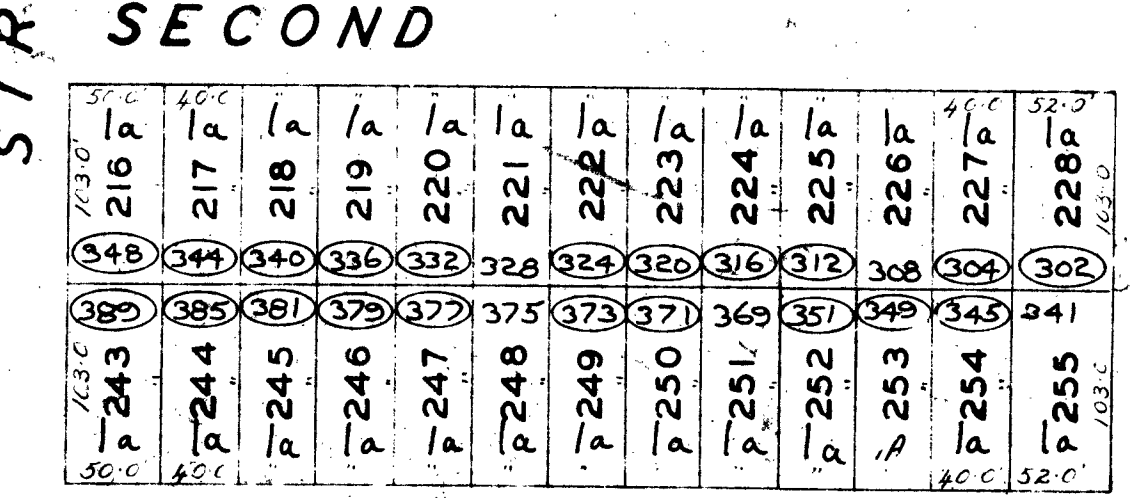
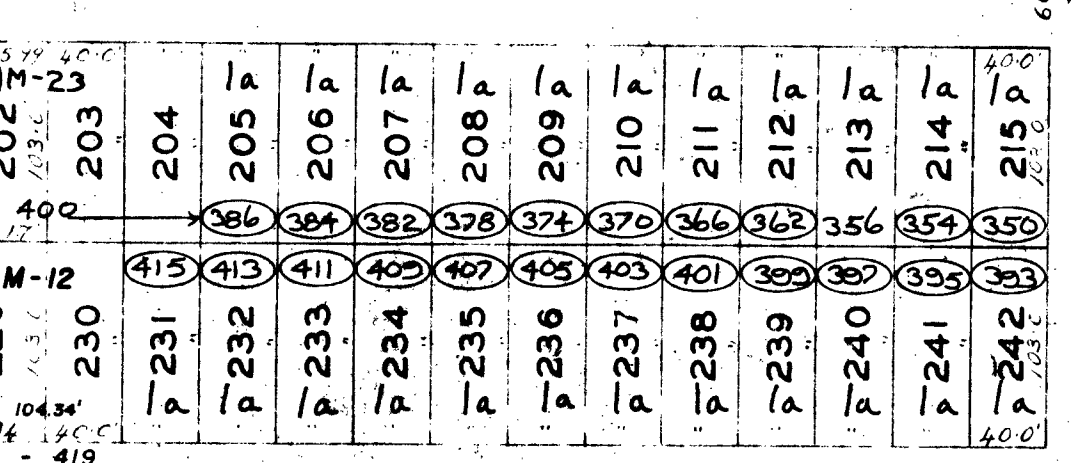
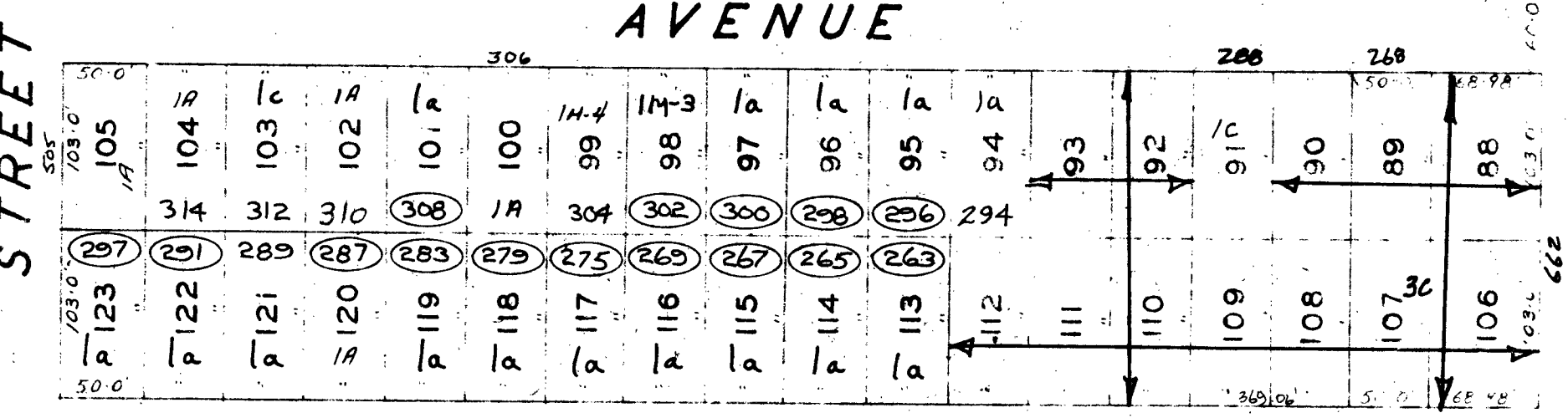
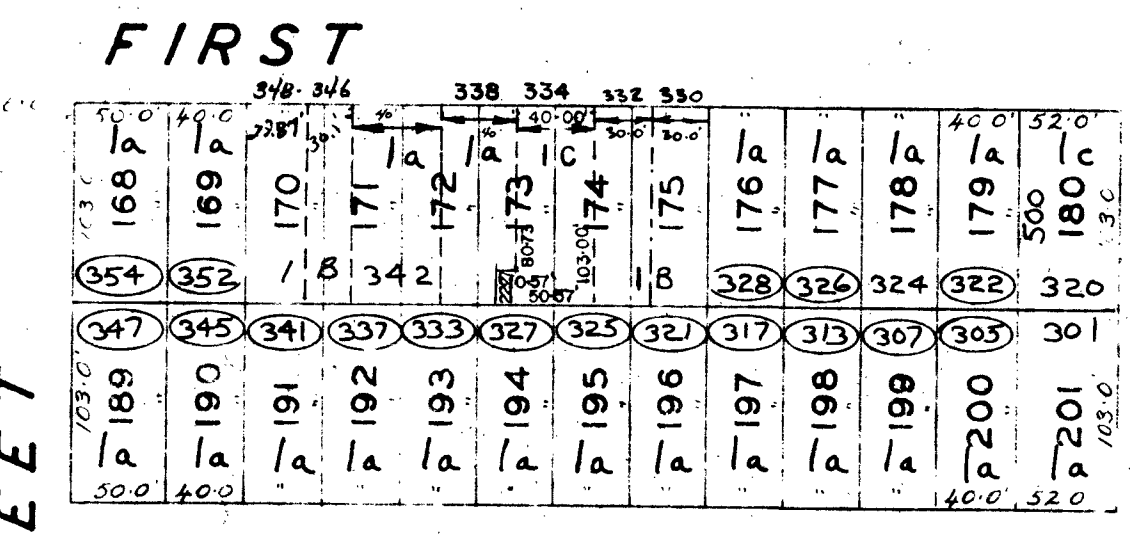
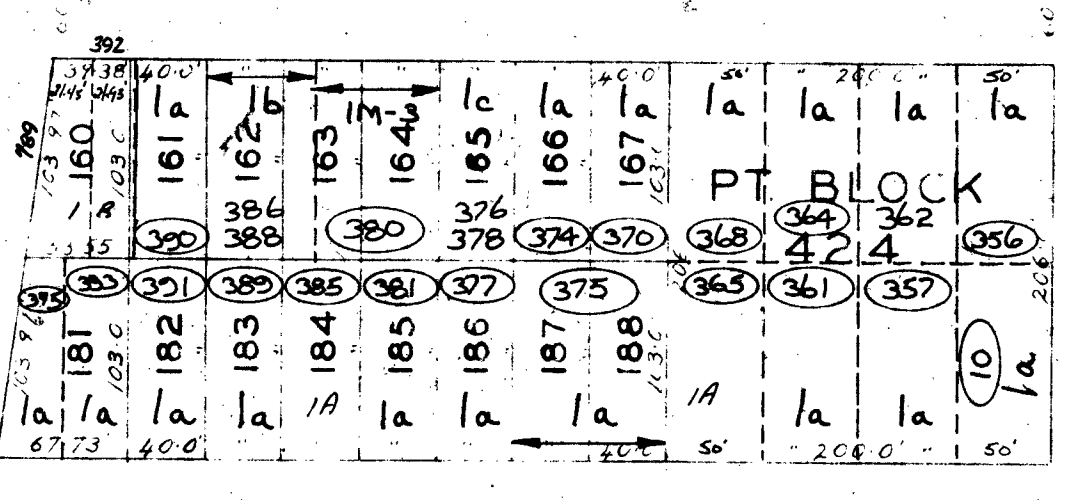
GLEBE

LOT G
LOT H

AVENUE



SOUTH



CORPORATION OF OTTAWA
ENGINEERING DEPARTMENT - LEGAL SURVEYS BRANCH

SHEET G-II

PLAN OF CITY OF OTTAWA

SCALE 100' = 1"

COPYRIGHT, CANADA, SERIAL NO. 181982

NOTE

LAND USE DATA IS COMPILED FROM PLANNING BRANCH
FIELD NOTES & INFORMATION SUPPLIED BY THE BUILDING
INSPECTION DIVISION OF THE DEPARTMENT OF PHYSICAL
ENVIRONMENT. THE BASE SHEET PLAN IS SUPPLIED BY
THE SURVEYS & MAPPING DIVISION OF THE DEPARTMENT
OF PHYSICAL ENVIRONMENT.

F-10	F-11	F-12
G-10		G-12
H-10	H-11	H-12

KEY TO ADJOINING SHEETS

THIS PLAN IS COMPILED FROM REGISTERED PLANS WITH THE ASSISTANCE OF
A MINIMUM OF FIELD SURVEY. MOST MEASUREMENTS SHOWN HEREON HAVE BEEN
TAKEN FROM SUCH PLANS OR FROM DEEDS OR BY-LAWS AND THEY ARE NOT
INTENDED TO DENY THE EXISTENCE OF EITHER SURPLUS OR DEFICIENCY WHICH
MAY BE FOUND UPON A MORE DETAILED SURVEY.

PREPARED BY SURVEY BRANCH
1834

APPROVED BY
R. G. Madziva
COMMISSIONER OF WORKS

DATE

PREPARED BY THE CITY OF OTTAWA PLANNING BRANCH