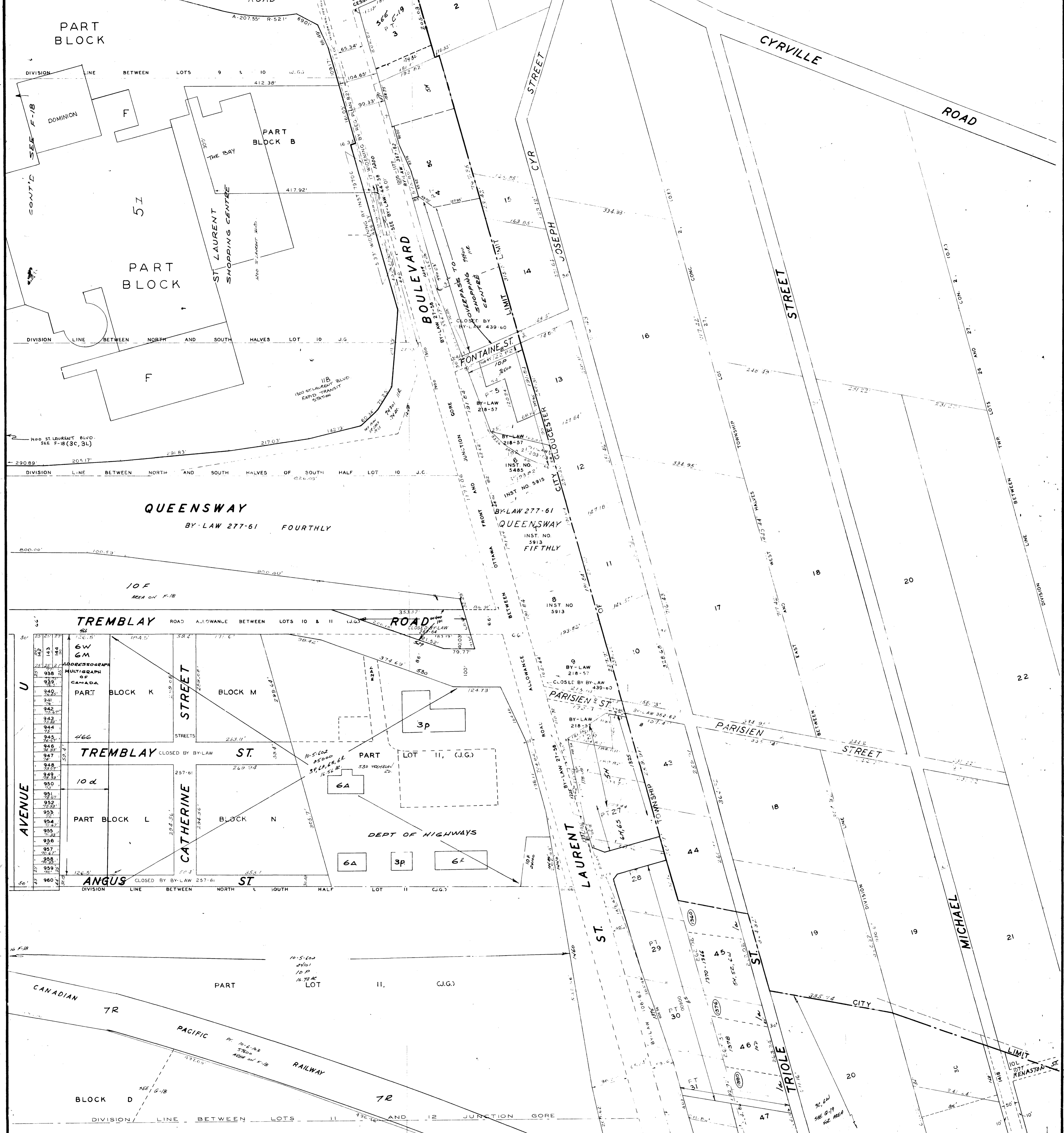
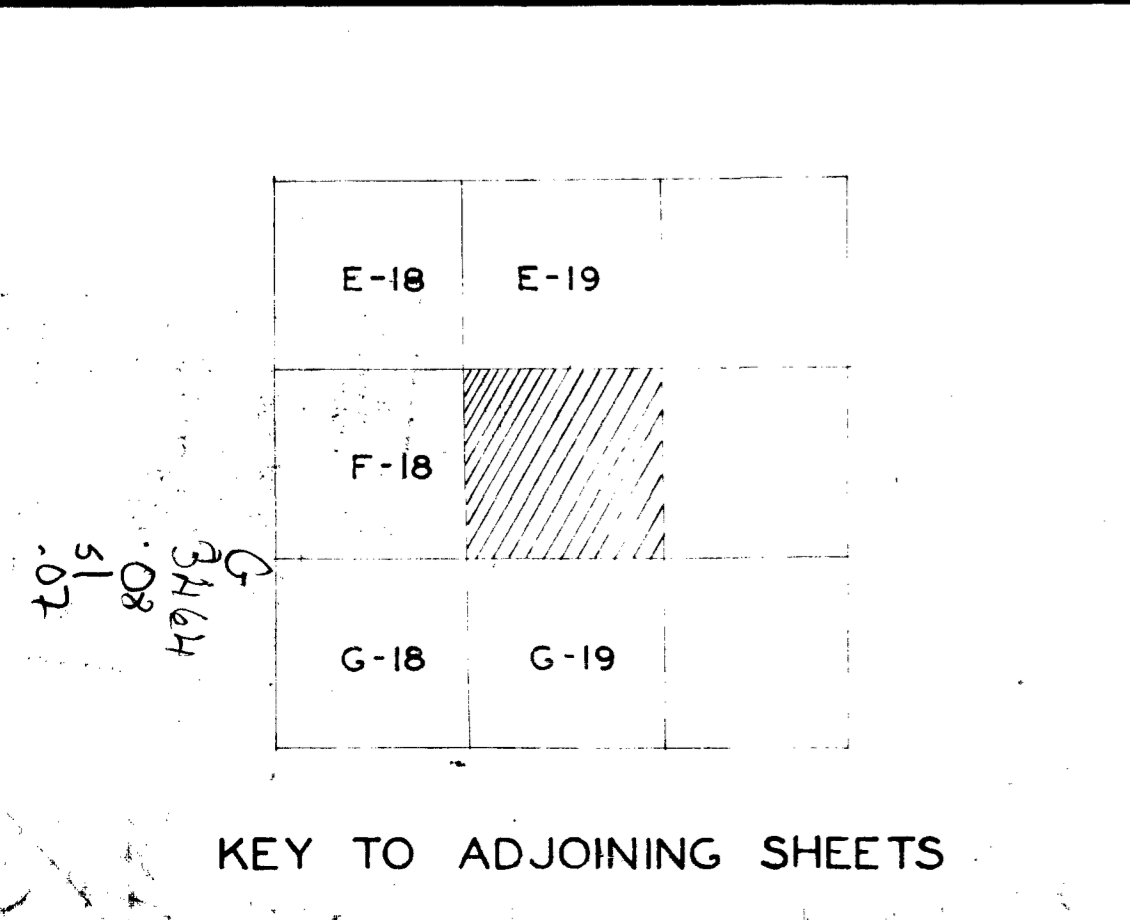


F-17



U
900
901
902
903
904
905
906
907
908
909
910
911
912
913
914
915
916
917
918
919
920
921
922
923
924
925
926
927
928
929
930
931
932
933
934
935
936
937
938
939
940
941
942
943
944
945
946
947
948
949
950
951
952
953
954
955
956
957
958
959
960



CORPORATION OF OTTAWA
SURVEYS AND MAPPING DIVISION

SHEET F-19

PLAN OF CITY OF OTTAWA
SCALE 1" = 100'

COPYRIGHT, CANADA, SERIAL NO 181982

THIS PLAN IS COMPILED FROM REGISTERED PLANS WITH THE ASSISTANCE OF A MINIMUM OF FIELD SURVEY. MOST MEASUREMENTS SHOWN HEREON HAVE BEEN TAKEN FROM SUCH PLANS OR FROM DEEDS OR BY-LAWS AND THEY ARE NOT INTENDED TO DENY THE EXISTENCE OF EITHER SURPLUS OR DEFICIENCY WHICH MAY BE FOUND UPON A MORE DETAILED SURVEY.

PREPARED BY SURVEY BRANCH 1952

APPROVED BY *[Signature]* COMMISSIONER OF WORKS

DATE OCTOBER 8, 1952

NOTE

LAND USE DATA IS COMPILED FROM PLANNING BRANCH FIELD NOTES & INFORMATION SUPPLIED BY THE BUILDING INSPECTION DIVISION OF THE DEPARTMENT OF PHYSICAL ENVIRONMENT. THE BASE SHEET PLAN IS SUPPLIED BY THE SURVEYS & MAPPING DIVISION OF THE DEPARTMENT OF PHYSICAL ENVIRONMENT.

R. H. Halzoun
COMMISSIONER OF WORKS