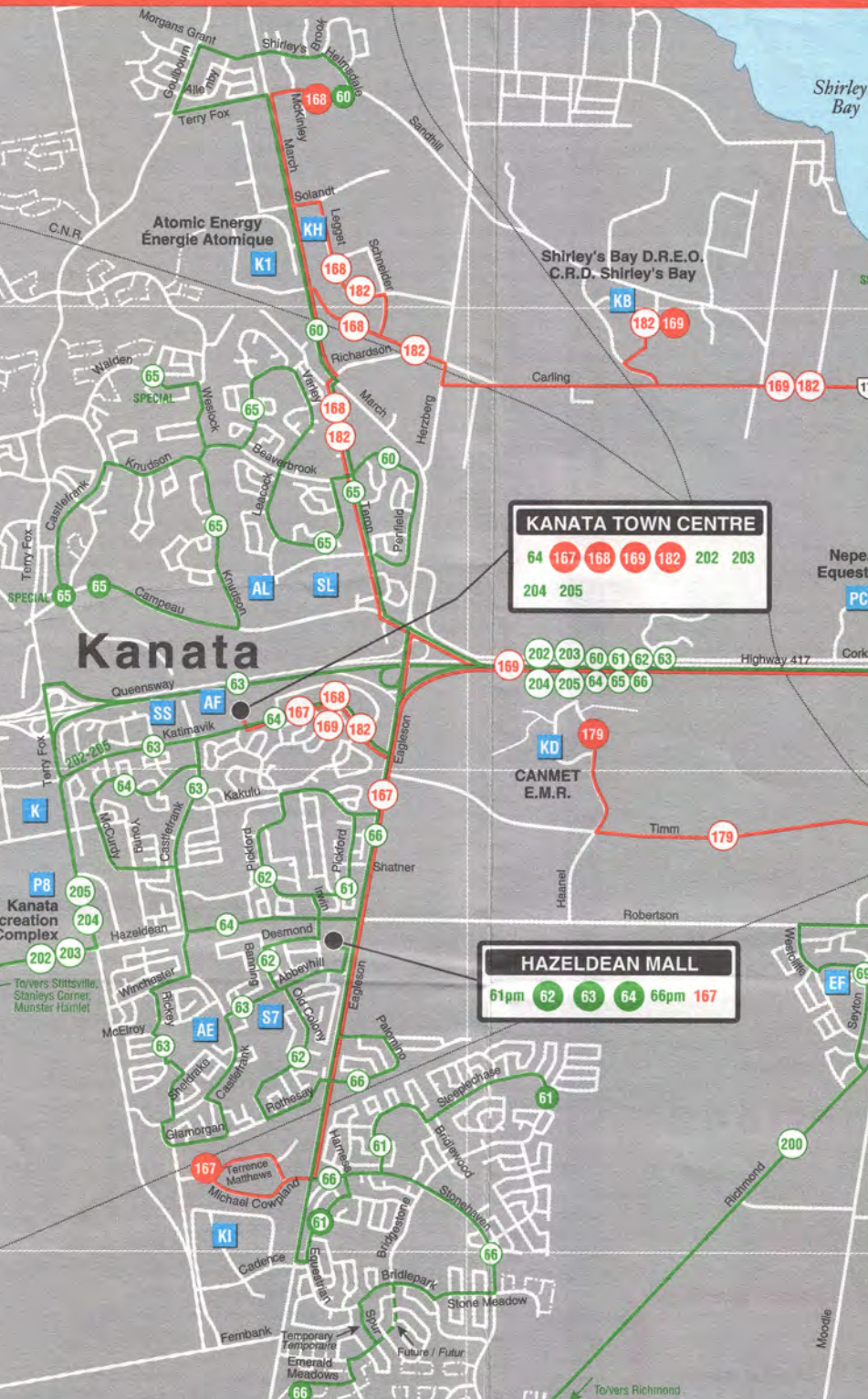




# Map Carte 2 Peak-Period Routes Circuits de pointe

Red and green routes run Monday to Friday, rush hours only. Les circuits rouges et verts circulent du lundi au vendredi aux heures de pointe seulement.



### Legend - Légende

**RED ROUTE** Operates weekday rush hours only, generally 6-9 AM & 3-6 PM. **CIRCUIT DE POINTE ROUGE** La semaine et en périodes de pointe seulement, généralement de 6h à 9h et de 15h à 18h.

**GREEN ROUTE** Operates weekday rush hours only, generally 6-9 AM & 3-6 PM. **CIRCUIT DE POINTE VERT** La semaine et en périodes de pointe seulement, généralement de 6h à 9h et de 15h à 18h. **TRAJET EXPRESS SUPPLÉMENTAIRE** requis.

**TERMINUS** Beginning or end of route. **TERMINUS** Début ou fin d'un circuit.

**Transway & Station** Transway & station.

**Transway & Station under construction** Transway & station en construction.

**OC Transpo Public Office** Bureau public d'OC Transpo.

**Park & Ride - Bike & Ride** Parc-O-Bus - Vélo-Bus.

**Hospital** Hôpital.

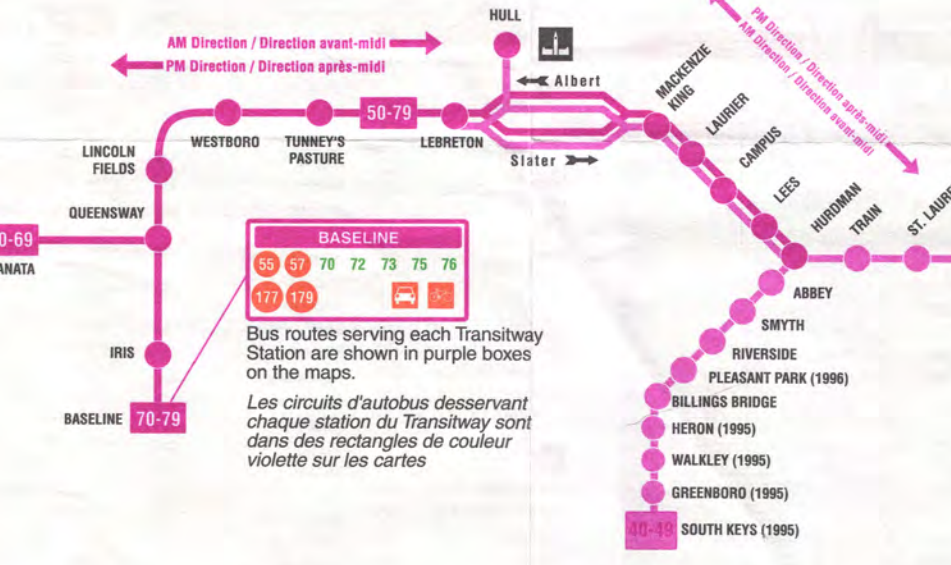
**Shopping Centre** Centre commercial.

**Schools, Points of Interest, etc.** Écoles, attrait principal, etc. (voir index).

Effective June 26, 1994 - En vigueur le 26 juin 1994.

Copyright 1994 Ottawa-Carleton Regional Transit Commission. Published by OC Transpo.

## The Transitway - Le Transitway



The Transitway is an exclusive bus corridor providing rapid transit service across the Ottawa-Carleton region. Rush hour routes 20 to 82 use the Transitway to and from downtown.

## Park & Ride - Parc-o-bus

If you drive your car into the city and want to travel around town, why not use our Park & Ride facilities at the following stations:

**Baseline**  
Parking is free evenings and on weekends. Call 741-4390 for information about Park & Ride prices and permits.

**Place d'Orléans**  
Parking is free evenings and on weekends. Call 741-4390 for information about Park & Ride prices and permits.

CARLETON MAP LIBRARY	G3464
Bus route w.c.p.s.	08
June 1994/95	P22
	1994
SCALE 1: 51,040 ca	D83

## Fares - Tarification

1-The fare for each route is displayed in the front window of the bus. **1-Le tarif de chaque circuit apparaît au pare-brise de l'autobus.**

2-Drivers do not sell tickets or make change. Fares can be paid by **CASH, tickets or pass.** **2-Les chauffeurs ne vendent pas de billets et ne font pas la monnaie. Le passage peut être payé en espèces, avec des billets ou un laissez-passer.**

3-Fares change by time of day and by type of circuit. **3-Les tarifs changent selon l'heure de la journée et le type de circuit.**

4-Peak fare periods are **Monday to Friday from 6-8:30 am and from 3-5:30 pm.** **4-Les périodes de pointe sont du lundi au vendredi de 6 h à 8h30 et de 15 h à 17h30.**

If you board a red or black route during the peak periods you must pay the peak fare. If you board a green express route you must pay the express premium. At all other times, the regular fare applies on all routes.

For detailed rate information, call 741-4390. See the Discount Fares section below for exceptions.

## Discount Fares - Tarifs réduits

**Senior citizens age 65 years and over**, with acceptable proof of age, pay off-peak fare on all routes. **Les citoyens âgés de 65 ans et plus** versent le tarif de base sur tous les circuits, en tout temps. **Les aînés peuvent aussi se procurer un laissez-passer à tarif réduit.**

**Children age 5 years and under** travel free when accompanied by an adult. **Les enfants de 5 ans ou moins**, accompagnés d'un adulte. **Les étudiants à temps plein** des écoles élémentaires, secondaires ou post-secondaires d'Ottawa-Carleton peuvent aussi se procurer un laissez-passer étudiant mensuel à tarif réduit.

For more information, call 741-4390. **Renseignements: 741-4390.**

## Kiss & Ride - Débarcadère-bise

For a convenient location to pick-up or drop-off bus passengers, the following stations provide a drop-off for private vehicles to pull-up and wait:

**Abbey**  
**Baseline**  
**Hurdman**  
**Lincoln Fields**

## Passes - Laissez-passer

Monthly passes are valid only with an OC Transpo Photo ID Card, which can be purchased at our public offices. There are five (5) different monthly passes.

**Transpass** - Valid as full fare on red and black routes at all times. On green express routes during peak periods, the express premium is required. University/College students may only use this pass from September to April.

**Student Unipass** - Valid as full fare on all routes at all times. University/College students may only use this pass from September to April.

**Senior Citizens** - Valid for Senior Citizens on all routes at all times.

## Proof of Payment - Preuve de paiement

Passengers on POP buses must have proof that they paid a fare: a valid and appropriate pass or transfer.

On articulated buses, passengers using a Transpass or Unipass are permitted to board by the rear doors Monday to Saturday until 7 pm.

Passengers paying with cash or tickets must board by the front door and obtain a transfer from the driver as proof of payment.

## Schedules - Horaires

**Regular routes**  
Black numbers (see map 1) Run 7 days a week, approximately 6:30 am to midnight.

**Black-striped numbers**  
Indicate that service does not run at all times (see exceptions under Map 1).

**Peak period routes**  
Red and Green numbers (see map 2)  
Run Monday to Friday during peak periods: 6-9 am and 3-6 pm.

**Circuits réguliers**  
Chiffres noirs (voir carte 1)  
7 jours par semaine, de 6 h 30 à minuit approximativement.

**Chiffres noirs et blancs**  
Indiquent qu'il n'y a pas de service à toutes les heures (voir les exceptions sous la carte 1).

**Circuits de pointe**  
Chiffres rouges et verts (voir la carte 2)  
Lundi au vendredi durant les périodes de pointe 6 h à 9 h et 15 h à 18 h.

**560" Bus stop number**  
2 29 37  
129

**Route numbers**  
Numéros des circuits

**Regular routes**  
Black numbers (see map 1) Run 7 days a week, approximately 6:30 am to midnight.

**Black-striped numbers**  
Indicate that service does not run at all times (see exceptions under Map 1).

**Peak period routes**  
Red and Green numbers (see map 2)  
Run Monday to Friday during peak periods: 6-9 am and 3-6 pm.

**Circuits réguliers**  
Chiffres noirs (voir carte 1)  
7 jours par semaine, de 6 h 30 à minuit approximativement.

**Chiffres noirs et blancs**  
Indiquent qu'il n'y a pas de service à toutes les heures (voir les exceptions sous la carte 1).

**Circuits de pointe**  
Chiffres rouges et verts (voir la carte 2)  
Lundi au vendredi durant les périodes de pointe 6 h à 9 h et 15 h à 18 h.

**560" Bus stop number**  
2 29 37  
129

**Route numbers**  
Numéros des circuits

## Early Morning Service - Service Matinal

On weekdays some routes start as early as 4:30 am. Look for the blue early morning sun on your bus stop. The blue sun means that bus service starts between 4 and 4:30 am weekdays, and between 5 and 5:30 am on Saturdays.

Routes 1, 2, 3, 4, 5, 7, 8, 16, 85, 95, 96, 97, 111, 118, 120, 142, 147, 161, 162, 163, 174, and 176 have early morning trips on all or part of their route.

Also, OC Transpo has nine early morning "only" routes, which serve areas not covered by the routes listed above.

Route 824 serves Beacon Hill, Carson Grove and Cummings Ave.

Route 825 serves Pineview, Blackburn Hamlet and Chapel Hill.

Route 829 serves Overbrook and Vanier.

Route 835 serves Fallingbrook and Queenswood Heights.

Route 837 serves Queenswood Heights and Orleans Village.

Route 844 serves Greenboro, South Keys and Elmville.

Route 846 serves Riverside Park and Hunt Club.

Route 875 serves Woodroffe Avenue, Barhaven, Greenbank and Bayshore.

Route 891 travels from Lincoln Fields to St. Laurent via Pinecrest, City View, Carleton Heights and the Riverside corridor.

Tous les autres circuits de couleur noire débutent leurs trajets à l'heure habituelle la semaine entre 6 h et 6h30, le samedi entre 6h30 et 7 h et le dimanche entre 7 h et 7h30.

Pour plus d'information concernant le service matinal d'OC Transpo, veuillez téléphoner à notre centre d'information au 741-4390.

## Bus Riding Made Easy - Voyager par autobus, c'est facile!

**HELPFUL TIPS**

- Arrive at the bus stop a few minutes before your bus due and have your fare ready.
- Leave the front priority seating for passengers who are unable to stand on a moving bus.
- Move to the back of the bus and keep the front aisle clear.
- Exit using the rear doors.

**CONSEILS PRATIQUES**

- Rendez-vous à votre arrêt quelques minutes avant l'heure prévue d'arrivée de votre autobus et ayez en main votre tarif.
- Laissez les sièges prioritaires libres pour les passagers qui ne peuvent rester debout dans un autobus en mouvement.
- SVT: libérez l'allée en avant de l'autobus en vous rendant à l'arrière.
- Sortez de l'autobus en utilisant les portes arrière.

**EASIER ACCESS**

Many OC Transpo buses are equipped with features that make them easier for the public to use, such as:

- buses that lower to the curb so boarding is easier
- a public address system to announce transfer stations and major intersections
- easy-to-reach stop request buttons and yellow pull-cords
- extra lighting inside and outside the door.

OC Transpo buses are identified by the bright green decal located on the outside of the bus beside the front door.

**Easier Access Facile d'accès**

Copyright 1994 Ottawa-Carleton Regional Transit Commission. Published by OC Transpo.

Copyright 1994 Ottawa-Carleton Regional Transit Commission. Published by OC Transpo.

Copyright 1994 Ottawa-Carleton Regional Transit Commission. Published by OC Transpo.

Copyright 1994 Ottawa-Carleton Regional Transit Commission. Published by OC Transpo.

### Ottawa-Carleton Regional Transit Commission

1500 St. Laurent Blvd., Ottawa, Ontario K1G 0Z8 (613) 741-6440

**Transit Information 741-4390**  
Route and other service information. Printed maps and timetables will be mailed on request. Free of charge from our Information Centre.  
Monday to Saturday ..... 6 am - 11 pm  
Sundays & Holidays ..... 8 am - 11 pm  
TDD ..... 741-5280

**Public Offices**  
Tickets and passes - Photo I.D. cards  
Corner Albert & Kent, Place de Ville, Tower "A"  
Lincoln Fields Station  
Place d'Orléans Station

**Customer Service 748-4408**  
Complaints, suggestions and compliments  
Monday to Friday ..... 8 am - 5 pm

**Lost and Found 563-4011**  
Corner Albert & Kent, Place de Ville, Tower "A"  
Monday to Friday ..... 8:30 am - 5 pm

**Sightseeing - Gray Line 748-4426**  
Charters  
Monday to Friday ..... 8:30 am - 4:30 pm

**Para Transpo 748-4406**  
Monday to Friday ..... 8 am - 5 pm

June 27, 1994  
Information is subject to change without notice.  
Published by OC Transpo © 1994

### Bus Route Maps

### Cartes des circuits d'autobus

June / juin 1994/95

Ottawa-Carleton Regional Transit Commission  
Commission de transport régionale d'Ottawa-Carleton

OC Transpo

### Commission de transport régionale d'Ottawa-Carleton

1500 boul. St-Laurent, Ottawa (Ontario) K1G 0Z8 (613) 741-6440

**Renseignements 741-4390**  
Parcours et horaires des circuits d'autobus. Sur demande, des cartes et horaires peuvent être postés gratuitement de notre centre d'information.  
Lundi au samedi ..... 06h00 - 23h00  
Dimanche et jours fériés ..... 08h00 - 23h00  
ATMÉ ..... 741-5280

**Bureaux publics**  
Billets et laissez-passer - Cartes photo d'identité  
Angle de Albert et Kent, Place de Ville, tour "A"  
Station Lincoln Fields  
Station St-Laurent  
Station Place d'Orléans

**Service à la clientèle 748-4408**  
Suggestions, compliments et plaintes  
Lundi au vendredi ..... 08h00 - 17h00

**Objets perdus et retrouvés 563-4011**  
Angle de Albert et Kent, Place de Ville, tour "A"  
Lundi au vendredi ..... 08h30 - 17h00

**Tours de ville - Gray Line 748-4426**  
Location  
Lundi au vendredi ..... 08h30 - 16h30

**Para Transpo 748-4406**  
Lundi au vendredi ..... 08h00 - 17h00

27 juin 1994  
Les informations peuvent être modifiées sans pré-avis.  
Publié by OC Transpo © 1994

CARLETON UNIVERSITY

CARLETON UNIVERSITY