

Exceptions

Regular routes (black numbers) run 7 days/week including holidays, except the following:

SUNDAYS & HOLIDAYS
Routes 99, 110, 117, 123, 140, 141 and 176 do not operate.
Route 2 doesn't travel into Lincoln Heights Galleria.
Route 118 travels between Billings Bridge and Elmvalle only.
Route 118 doesn't travel via Terry Fox.
Route 122 doesn't travel east of Montreal at Elwood.
Route 125 doesn't travel on Southpark or Tauvette.
Route 128 doesn't travel on Westpark, Northpark, Ridgeway, Eastpark or Innes.
Route 147 doesn't travel north of Elmvalle to St. Laurent.
Route 151 is extended south of Baseline Road along Merivale to Clyde and then Clyde to Baseline.
Route 156 doesn't travel between Bayshore and Lincoln Fields Station.
Route 163 does not enter Kanata North Business Park.
Route 166 does not serve Grandview.

SATURDAYS
Routes 110 and 117 do not operate.
Route 99 does not travel between Hurdman Station and Blair.

Regular routes run all day long, generally from 6 AM to midnight, with the following exceptions:

AFTER APPROXIMATELY 6:00 PM
Route 8 doesn't travel between Terrasses de la Chaudière and the Museum of Civilization.
Route 99 doesn't travel between Hurdman Station and Blair.
Route 110 doesn't operate.
Route 118 doesn't travel via Terry Fox.

AFTER APPROXIMATELY 10:00 PM
Routes 99, 140 and 141 do not operate.
Route 122 doesn't travel east of Beacon Hill shopping centre.
Route 147 doesn't travel north of Elmvalle to St. Laurent.

OTHER TIMES
Route 110 doesn't operate before 9 AM.
Route 117 doesn't travel between Carleton University and Billings Bridge, during May, June, July and August.
Route 175 doesn't travel on Colonnade in the AM peak-period towards Billings Bridge, or in the PM peak-period towards Baseline.

Les circuits réguliers (chiffres noirs) sont exploités 7 jours par semaine, y compris les jours fériés, sauf les circuits suivants:

DIMANCHE ET JOURS FÉRIÉS
Les circuits 99, 110, 117, 123, 140, 141 et 176 ne sont pas en service.
Le circuit 2 ne circule pas dans Lincoln Heights Galleria.
Le circuit 118 ne circule qu'entre Billings Bridge et Elmvalle.
Le circuit 118 ne passe pas par Terry Fox.
Le circuit 122 ne va pas à l'est du Centre commercial de Montréal.
Le circuit 125 ne circule pas sur Southpark ou Tauvette.
Le circuit 128 ne circule pas sur Southpark ou Tauvette, Ridgeway, Eastpark ou Innes.
Le circuit 147 ne va pas au nord d'Elmvalle jusqu'à Saint-Laurent.
Le circuit 151 est prolongé au sud du chemin Baseline, empruntant Merivale jusqu'à Clyde, puis Clyde jusqu'à Baseline.
Le circuit 156 ne circule pas entre Bayshore et la station Lincoln Fields.
Le circuit 163 ne circule pas dans le Kanata N. Business Park.
Le circuit 166 ne circule pas sur Grandview.

SAMEDI
Les circuits 110 et 117 ne sont pas en service.
Le circuit 99 ne circule pas entre la station Hurdman et Blair.

Les circuits réguliers sont exploités toute la journée, de 6 h à minuit (règle générale), sauf les circuits suivants:

PASSÉ 18 h 00
Le circuit 8 ne circule pas entre les Terrasses de la Chaudière et le Musée des civilisations.
Le circuit 99 ne circule pas entre la station Hurdman et Blair.
Le circuit 110 n'est pas en service.
Le circuit 118 ne passe pas par Terry Fox.

PASSÉ 22 h 00
Les circuits 99, 140 et 141 ne sont pas en service.
Le circuit 122 ne va pas à l'est du centre commercial de Beacon Hill.
Le circuit 147 ne va pas au nord d'Elmvalle jusqu'à Saint-Laurent.

AUTRES HEURES
Le circuit 110 n'est pas en service avant 9 h 00.
Le circuit 117 ne circule pas entre l'Université Carleton et Billings Bridge, durant le mois de mai, juin, juillet et août.
Le circuit 175 ne circule pas sur Colonnade en direction de Billings Bridge aux heures de pointe du matin, ni en direction de Baseline aux heures de pointe de l'après-midi.

THE TRANSITWAY / LE TRANSITWAY

The Transitway is an exclusive bus corridor providing rapid transit services across the Ottawa-Carleton region. Major Transitway services are provided by routes 95, 96 and 97. The transitway, au moyen de couloirs d'autobus réservés, fournit un service de transport urbain rapide à travers la région d'Ottawa-Carleton. Le service majeur du Transitway est fourni par les circuits 95, 96, et 97.

Park & Ride / Parc-o-bus
If you drive your car into the city but want to use OC Transpo to travel around town, you may want to use our PARK & RIDE facilities at BASELINE STATION or PLACE D'ORLÉANS.
Parking is free on weekends, and after 9:30 AM weekdays.
Call 741-4390 for information about Park & Ride prices and permits.

Kiss & Ride / Débarcadère-bise
You can take a convenient location to pick-up or drop-off bus passengers? ABBEY, BASELINE, HURDMAN and LINCOLN FIELDS Stations provide a spot for private vehicles to pick-up and wait.
Aimeriez-vous pouvoir stationner la voiture durant quelques minutes pour déposer un voyageur ou le prendre à sa sortie de l'autobus? Des postes d'attente sont prévus à cette fin aux stations ABBEY, BASELINE, HURDMAN et LINCOLN FIELDS.

Shopping Centres / Centres d'achats
Barhaven Mall C3
Bayshore C3
Billings Bridge C3
Carlingwood C3
Convent Glen C4
Elmvalle C3
Glebe Centre (Station Blair Station) C7
Hazeldean Mall C6
K-Mart Belles Corners C2
K-Mart Blossom Park C2
Kanata Town Centre C1
Lincoln Heights Galleria C4
Marivale Mall C4
Pinecrest Mall C3
Place d'Orléans C7
Rideau Centre C8
St. Laurent C1
Weelegate C5

Bike & Ride / Vel-o-bus
If you want to lock your bicycle up for the day and use the bus service, these Transitway Stations have bicycle racks for your convenience: BASELINE, LINCOLN FIELDS, CAMPUS, HURDMAN & BLAIR.

How to use the INDEX / Comment utiliser cet INDEX

All of the places in the index are shown on Map 1 and Map 2 with a symbol. Tous les endroits mentionnés dans l'index sont montrés par des symboles sur la Carte 1 et la Carte 2.

Use the name and letter-code to identify the place. Utiliser le nom et le code-lettre pour identifier l'endroit.

Use the grid-code to find the right place on the maps. Utiliser le code de quadrillage pour trouver le bon endroit sur les cartes.

OC Transpo Public Offices / Bureaux publics d'OC Transpo
294 Albert St. B6
Station Lincoln Fields Station B4
Station St. Laurent Station B7
1000 St. Laurent C7

Points of interest / Attraits principaux
Atomic Energy of Canada / Énergie atomique du Canada A1
Bel Northern Research A1
Billings Estate / Domaine Billings A6
Canadian War Museum / Musée canadien de la guerre A6
Canadian Forces Base Ottawa North (Rockcliffe) A6
Canadian Forces Base Ottawa South (Uplands) A6
National Aviation Museum / Musée national de l'aviation A7
National Gallery of Canada / Musée des beaux-arts du Canada A6
Canadian Museum of Nature / Musée canadien de la nature B6
National Museum of Science & Technology / Musée national des sciences et de la technologie C7

Museums / Musées
Canadian Museum of Civilization / Musée canadien des civilisations A6
Canadian War Museum / Musée canadien de la guerre A6
National Aviation Museum / Musée national de l'aviation A7
National Gallery of Canada / Musée des beaux-arts du Canada A6
Canadian Museum of Nature / Musée canadien de la nature B6
National Museum of Science & Technology / Musée national des sciences et de la technologie C7

Park & Ride / Parc-o-bus
Place d'Orléans B 10
Station Baseline Station C 4

Transportation / Transport
AWATON Ottawa International Airport (Uplands) / Aéroport international d'Ottawa (Uplands) A E5
Gatineau Airport (Gatineau) / Aéroport de Gatineau (Gatineau) A 10
Administration: 665-0737

TRAIN
Via Rail 238-8289
B 87

BUS / AUTOBUS
Via Rail 238-8289
OC Transpo 770-3242
C 86

Park / Parc
Andrew Haydon K C3
Brewer M B3
Billemare M B3
Clark Memorial C1
Centre de loisirs communitaires Clark C1
Dow Lake L C5
Hog's Back K C1
Kensington K R1
Lansdowne Q B6
Major's Hill K B6
Mooney's Bay S C5
Nepigon Squash Club M B3
Rideau Falls / Châlier Rideau U A6
Rideau River V B6
Rockcliffe Airport / Aéroport Rockcliffe W A8
Dow Lake / Lac Dow X A7
St. Vincent Y B6
Vincent Massey Z C5

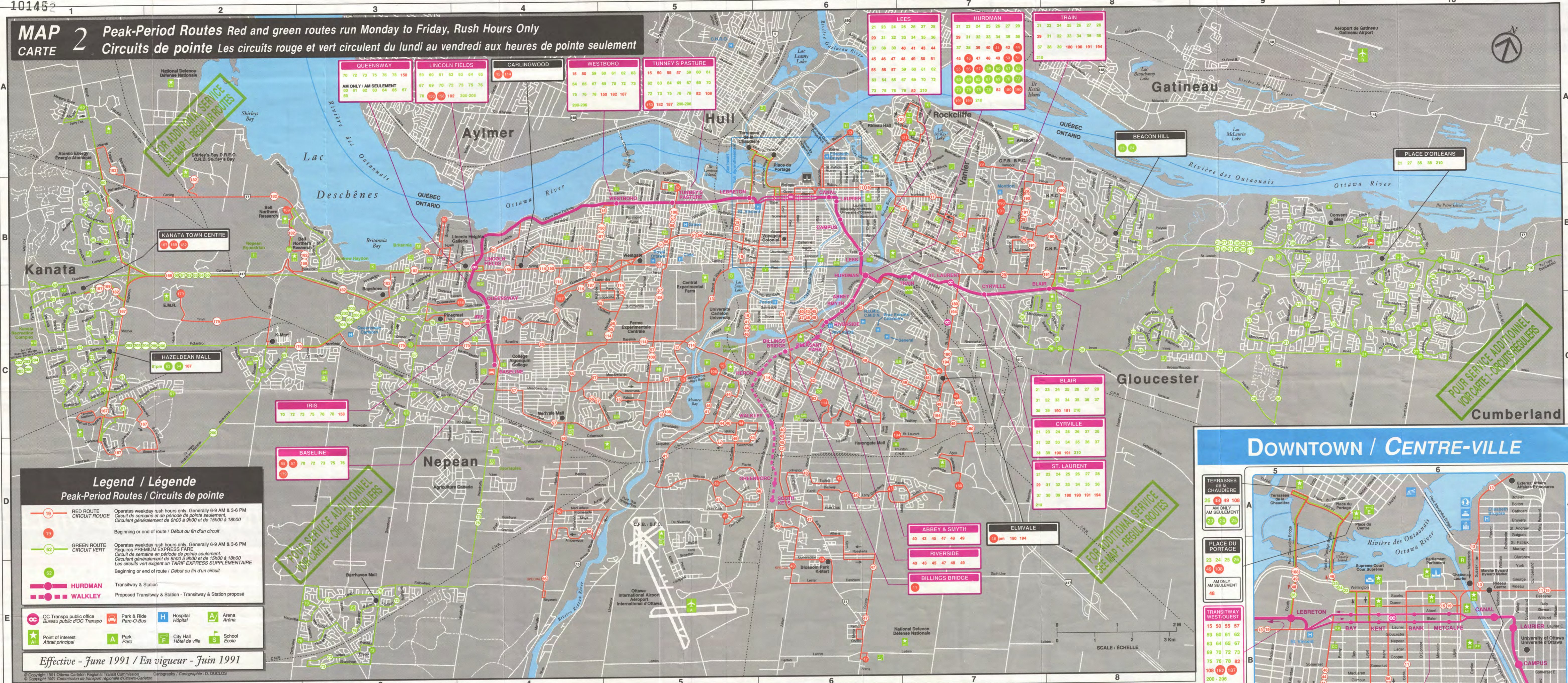
Hospitals / Hôpitaux
Children's / Pour enfants C6
C.H.R.O. C6
St. Elizabeth's / St. Elizabeth C6
Ottawa General A6
St. Vincent B7
N.D.M.C. / C.M.D.M. C6
Perley C6
Quenners-Carleton C3
Riverside C6
Royal Ottawa C6
St. Vincent B7
Morrison B7

DOWNTOWN / CENTRE-VILLE

LEBRETON 8 86 95 96 97 176
ALBERT / SLATER 3 8 85 86 95 96 97
MAIL RIDEAU MALL 1 2 3 4 5 6
7 14 16 18
CAMPUS 8 16 85 86 95 96 97

Streets / Rues
A: Somerset, Somerset E, Somerset W
B: Somerset E, Somerset W
C: Somerset E, Somerset W
D: Somerset E, Somerset W
E: Somerset E, Somerset W
F: Somerset E, Somerset W
G: Somerset E, Somerset W
H: Somerset E, Somerset W
I: Somerset E, Somerset W
J: Somerset E, Somerset W
K: Somerset E, Somerset W
L: Somerset E, Somerset W
M: Somerset E, Somerset W
N: Somerset E, Somerset W
O: Somerset E, Somerset W
P: Somerset E, Somerset W
Q: Somerset E, Somerset W
R: Somerset E, Somerset W
S: Somerset E, Somerset W
T: Somerset E, Somerset W
U: Somerset E, Somerset W
V: Somerset E, Somerset W
W: Somerset E, Somerset W
X: Somerset E, Somerset W
Y: Somerset E, Somerset W
Z: Somerset E, Somerset W

Schools / Écoles
Algonquin College O C4
Woodroffe A C4
Colonel By B B1
Huron Park C C6
Rideau D D7
Robert Gouin F F7
St. Laurent T B6
St. Mary's H B5
St. Patrick U D4
St. Vincent V B5
St. Joseph W B5
St. Lawrence X C6
St. Mary's Y B5
St. Patrick Z C6
St. Vincent AA C6
St. Joseph AB C6
St. Lawrence AC C6
St. Mary's AD C6
St. Patrick AE C6
St. Vincent AF C6
St. Joseph AG C6
St. Lawrence AH C6
St. Mary's AI C6
St. Patrick AJ C6
St. Vincent AK C6
St. Joseph AL C6
St. Lawrence AM C6
St. Mary's AN C6
St. Patrick AO C6
St. Vincent AP C6
St. Joseph AQ C6
St. Lawrence AR C6
St. Mary's AS C6
St. Patrick AT C6
St. Vincent AU C6
St. Joseph AV C6
St. Lawrence AW C6
St. Mary's AX C6
St. Patrick AY C6
St. Vincent AZ C6
St. Joseph BA C6
St. Lawrence BB C6
St. Mary's BC C6
St. Patrick BD C6
St. Vincent BE C6
St. Joseph BF C6
St. Lawrence BG C6
St. Mary's BH C6
St. Patrick BI C6
St. Vincent BJ C6
St. Joseph BK C6
St. Lawrence BL C6
St. Mary's BM C6
St. Patrick BN C6
St. Vincent BO C6
St. Joseph BP C6
St. Lawrence BQ C6
St. Mary's BR C6
St. Patrick BS C6
St. Vincent BT C6
St. Joseph BU C6
St. Lawrence BV C6
St. Mary's BW C6
St. Patrick BX C6
St. Vincent BY C6
St. Joseph BZ C6
St. Lawrence CA C6
St. Mary's CB C6
St. Patrick CC C6
St. Vincent CD C6
St. Joseph CE C6
St. Lawrence CF C6
St. Mary's CG C6
St. Patrick CH C6
St. Vincent CI C6
St. Joseph CJ C6
St. Lawrence CK C6
St. Mary's CL C6
St. Patrick CM C6
St. Vincent CN C6
St. Joseph CO C6
St. Lawrence CP C6
St. Mary's CQ C6
St. Patrick CR C6
St. Vincent CS C6
St. Joseph CT C6
St. Lawrence CU C6
St. Mary's CV C6
St. Patrick CW C6
St. Vincent CX C6
St. Joseph CY C6
St. Lawrence CZ C6
St. Mary's CA C6
St. Patrick CB C6
St. Vincent CC C6
St. Joseph CD C6
St. Lawrence CE C6
St. Mary's CF C6
St. Patrick CG C6
St. Vincent CH C6
St. Joseph CI C6
St. Lawrence CJ C6
St. Mary's CK C6
St. Patrick CL C6
St. Vincent CM C6
St. Joseph CN C6
St. Lawrence CO C6
St. Mary's CP C6
St. Patrick CQ C6
St. Vincent CR C6
St. Joseph CS C6
St. Lawrence CT C6
St. Mary's CU C6
St. Patrick CV C6
St. Vincent CW C6
St. Joseph CX C6
St. Lawrence CY C6
St. Mary's CZ C6
St. Patrick CA C6
St. Vincent CB C6
St. Joseph CC C6
St. Lawrence CD C6
St. Mary's CE C6
St. Patrick CF C6
St. Vincent CG C6
St. Joseph CH C6
St. Lawrence CI C6
St. Mary's CJ C6
St. Patrick CK C6
St. Vincent CL C6
St. Joseph CM C6
St. Lawrence CN C6
St. Mary's CO C6
St. Patrick CP C6
St. Vincent CQ C6
St. Joseph CR C6
St. Lawrence CS C6
St. Mary's CT C6
St. Patrick CU C6
St. Vincent CV C6
St. Joseph CW C6
St. Lawrence CX C6
St. Mary's CY C6
St. Patrick CZ C6
St. Vincent CA C6
St. Joseph CB C6
St. Lawrence CC C6
St. Mary's CD C6
St. Patrick CE C6
St. Vincent CF C6
St. Joseph CG C6
St. Lawrence CH C6
St. Mary's CI C6
St. Patrick CJ C6
St. Vincent CK C6
St. Joseph CL C6
St. Lawrence CM C6
St. Mary's CN C6
St. Patrick CO C6
St. Vincent CP C6
St. Joseph CQ C6
St. Lawrence CR C6
St. Mary's CS C6
St. Patrick CU C6
St. Vincent CV C6
St. Joseph CW C6
St. Lawrence CX C6
St. Mary's CY C6
St. Patrick CZ C6
St. Vincent CA C6
St. Joseph CB C6
St. Lawrence CC C6
St. Mary's CD C6
St. Patrick CE C6
St. Vincent CF C6
St. Joseph CG C6
St. Lawrence CH C6
St. Mary's CI C6
St. Patrick CJ C6
St. Vincent CK C6
St. Joseph CL C6
St. Lawrence CM C6
St. Mary's CN C6
St. Patrick CO C6
St. Vincent CP C6
St. Joseph CQ C6
St. Lawrence CR C6
St. Mary's CS C6
St. Patrick CU C6
St. Vincent CV C6
St. Joseph CW C6
St. Lawrence CX C6
St. Mary's CY C6
St. Patrick CZ C6
St. Vincent CA C6
St. Joseph CB C6
St. Lawrence CC C6
St. Mary's CD C6
St. Patrick CE C6
St. Vincent CF C6
St. Joseph CG C6
St. Lawrence CH C6
St. Mary's CI C6
St. Patrick CJ C6
St. Vincent CK C6
St. Joseph CL C6
St. Lawrence CM C6
St. Mary's CN C6
St. Patrick CO C6
St. Vincent CP C6
St. Joseph CQ C6
St. Lawrence CR C6
St. Mary's CS C6
St. Patrick CU C6
St. Vincent CV C6
St. Joseph CW C6
St. Lawrence CX C6
St. Mary's CY C6
St. Patrick CZ C6
St. Vincent CA C6
St. Joseph CB C6
St. Lawrence CC C6
St. Mary's CD C6
St. Patrick CE C6
St. Vincent CF C6
St. Joseph CG C6
St. Lawrence CH C6
St. Mary's CI C6
St. Patrick CJ C6
St. Vincent CK C6
St. Joseph CL C6
St. Lawrence CM C6
St. Mary's CN C6
St. Patrick CO C6
St. Vincent CP C6
St. Joseph CQ C6
St. Lawrence CR C6
St. Mary's CS C6
St. Patrick CU C6
St. Vincent CV C6
St. Joseph CW C6
St. Lawrence CX C6
St. Mary's CY C6
St. Patrick CZ C6
St. Vincent CA C6
St. Joseph CB C6
St. Lawrence CC C6
St. Mary's CD C6
St. Patrick CE C6
St. Vincent CF C6
St. Joseph CG C6
St. Lawrence CH C6
St. Mary's CI C6
St. Patrick CJ C6
St. Vincent CK C6
St. Joseph CL C6
St. Lawrence CM C6
St. Mary's CN C6
St. Patrick CO C6
St. Vincent CP C6
St. Joseph CQ C6
St. Lawrence CR C6
St. Mary's CS C6
St. Patrick CU C6
St. Vincent CV C6
St. Joseph CW C6
St. Lawrence CX C6
St. Mary's CY C6
St. Patrick CZ C6
St. Vincent CA C6
St. Joseph CB C6
St. Lawrence CC C6
St. Mary's CD C6
St. Patrick CE C6
St. Vincent CF C6
St. Joseph CG C6
St. Lawrence CH C6
St. Mary's CI C6
St. Patrick CJ C6
St. Vincent CK C6
St. Joseph CL C6
St. Lawrence CM C6
St. Mary's CN C6
St. Patrick CO C6
St. Vincent CP C6
St. Joseph CQ C6
St. Lawrence CR C6
St. Mary's CS C6
St. Patrick CU C6
St. Vincent CV C6
St. Joseph CW C6
St. Lawrence CX C6
St. Mary's CY C6
St. Patrick CZ C6
St. Vincent CA C6
St. Joseph CB C6
St. Lawrence CC C6
St. Mary's CD C6
St. Patrick CE C6
St. Vincent CF C6
St. Joseph CG C6
St. Lawrence CH C6
St. Mary's CI C6
St. Patrick CJ C6
St. Vincent CK C6
St. Joseph CL C6
St. Lawrence CM C6
St. Mary's CN C6
St. Patrick CO C6
St. Vincent CP C6
St. Joseph CQ C6
St. Lawrence CR C6
St. Mary's CS C6
St. Patrick CU C6
St. Vincent CV C6
St. Joseph CW C6
St. Lawrence CX C6
St. Mary's CY C6
St. Patrick CZ C6
St. Vincent CA C6
St. Joseph CB C6
St. Lawrence CC C6
St. Mary's CD C6
St. Patrick CE C6
St. Vincent CF C6
St. Joseph CG C6
St. Lawrence CH C6
St. Mary's CI C6
St. Patrick CJ C6
St. Vincent CK C6
St. Joseph CL C6
St. Lawrence CM C6
St. Mary's CN C6
St. Patrick CO C6
St. Vincent CP C6
St. Joseph CQ C6
St. Lawrence CR C6
St. Mary's CS C6
St. Patrick CU C6
St. Vincent CV C6
St. Joseph CW C6
St. Lawrence CX C6
St. Mary's CY C6
St. Patrick CZ C6
St. Vincent CA C6
St. Joseph CB C6
St. Lawrence CC C6
St. Mary's CD C6
St. Patrick CE C6
St. Vincent CF C6
St. Joseph CG C6
St. Lawrence CH C6
St. Mary's CI C6
St. Patrick CJ C6
St. Vincent CK C6
St. Joseph CL C6
St. Lawrence CM C6
St. Mary's CN C6
St. Patrick CO C6
St. Vincent CP C6
St. Joseph CQ C6
St. Lawrence CR C6
St. Mary's CS C6
St. Patrick CU C6
St. Vincent CV C6
St. Joseph CW C6
St. Lawrence CX C6
St. Mary's CY C6
St. Patrick CZ C6
St. Vincent CA C6
St. Joseph CB C6
St. Lawrence CC C6
St. Mary's CD C6
St. Patrick CE C6
St. Vincent CF C6
St. Joseph CG C6
St. Lawrence CH C6
St. Mary's CI C6
St. Patrick CJ C6
St. Vincent CK C6
St. Joseph CL C6
St. Lawrence CM C6
St. Mary's CN C6
St. Patrick CO C6
St. Vincent CP C6
St. Joseph CQ C6
St. Lawrence CR C6
St. Mary's CS C6
St. Patrick CU C6
St. Vincent CV C6
St. Joseph CW C6
St. Lawrence CX C6
St. Mary's CY C6
St. Patrick CZ C6
St. Vincent CA C6
St. Joseph CB C6
St. Lawrence CC C6
St. Mary's CD C6
St. Patrick CE C6
St. Vincent CF C6
St. Joseph CG C6
St. Lawrence CH C6
St. Mary's CI C6
St. Patrick CJ C6
St. Vincent CK C6
St. Joseph CL C6
St. Lawrence CM C6
St. Mary's CN C6
St. Patrick CO C6
St. Vincent CP C6
St. Joseph CQ C6
St. Lawrence CR C6
St. Mary's CS C6
St. Patrick CU C6
St. Vincent CV C6
St. Joseph CW C6
St. Lawrence CX C6
St. Mary's CY C6
St. Patrick CZ C6
St. Vincent CA C6
St. Joseph CB C6
St. Lawrence CC C6
St. Mary's CD C6
St. Patrick CE C6
St. Vincent CF C6
St. Joseph CG C6
St. Lawrence CH C6
St. Mary's CI C6
St. Patrick CJ C6
St. Vincent CK C6
St. Joseph CL C6
St. Lawrence CM C6
St. Mary's CN C6
St. Patrick CO C6
St. Vincent CP C6
St. Joseph CQ C6
St. Lawrence CR C6
St. Mary's CS C6
St. Patrick CU C6
St. Vincent CV C6
St. Joseph CW C6
St. Lawrence CX C6
St. Mary's CY C6
St. Patrick CZ C6
St. Vincent CA C6
St. Joseph CB C6
St. Lawrence CC C6
St. Mary's CD C6
St. Patrick CE C6
St. Vincent CF C6
St. Joseph CG C6
St. Lawrence CH C6
St. Mary's CI C6
St. Patrick CJ C6
St. Vincent CK C6
St. Joseph CL C6
St. Lawrence CM C6
St. Mary's CN C6
St. Patrick CO C6
St. Vincent CP C6
St. Joseph CQ C6
St. Lawrence CR C6
St. Mary's CS C6
St. Patrick CU C6
St. Vincent CV C6
St. Joseph CW C6
St. Lawrence CX C6
St. Mary's CY C6
St. Patrick CZ C6
St. Vincent CA C6
St. Joseph CB C6
St. Lawrence CC C6
St. Mary's CD C6
St. Patrick CE C6
St. Vincent CF C6
St. Joseph CG C6
St. Lawrence CH C6
St. Mary's CI C6
St. Patrick CJ C6
St. Vincent CK C6
St. Joseph CL C6
St. Lawrence CM C6
St. Mary's CN C6
St. Patrick CO C6
St. Vincent CP C6
St. Joseph CQ C6
St. Lawrence CR C6
St. Mary's CS C6
St. Patrick CU C6
St. Vincent CV C6
St. Joseph CW C6
St. Lawrence CX C6
St. Mary's CY C6
St. Patrick CZ C6
St. Vincent CA C6
St. Joseph CB C6
St. Lawrence CC C6
St. Mary's CD C6
St. Patrick CE C6
St. Vincent CF C6
St. Joseph CG C6
St. Lawrence CH C6
St. Mary's CI C6
St. Patrick CJ C6
St. Vincent CK C6
St. Joseph CL C6
St. Lawrence CM C6
St. Mary's CN C6
St. Patrick CO C6
St. Vincent CP C6
St. Joseph CQ C6
St. Lawrence CR C6
St. Mary's CS C6
St. Patrick CU C6
St. Vincent CV C6
St. Joseph CW C6
St. Lawrence CX C6
St. Mary's CY C6
St. Patrick CZ C6
St. Vincent CA C6
St. Joseph CB C6
St. Lawrence CC C6
St. Mary's CD C6
St. Patrick CE C6
St. Vincent CF C6
St. Joseph CG C6
St. Lawrence CH C6
St. Mary's CI C6
St. Patrick CJ C6
St. Vincent CK C6
St. Joseph CL C6
St. Lawrence CM C6
St. Mary's CN C6
St. Patrick CO C6
St. Vincent CP C6
St. Joseph CQ C6
St. Lawrence CR C6
St. Mary's CS C6
St. Patrick CU C6
St. Vincent CV C6
St. Joseph CW C6
St. Lawrence CX C6
St. Mary's CY C6
St. Patrick CZ C6
St. Vincent CA C6
St. Joseph CB C6
St. Lawrence CC C6
St. Mary's CD C6
St. Patrick CE C6
St. Vincent CF C6
St. Joseph CG C6
St. Lawrence CH C6
St. Mary's CI C6
St. Patrick CJ C6
St. Vincent CK C6
St. Joseph CL C6
St. Lawrence CM C6
St. Mary's CN C6
St. Patrick CO C6
St. Vincent CP C6
St. Joseph CQ C6
St. Lawrence CR C6
St. Mary's CS C6
St. Patrick CU C6
St. Vincent CV C6
St. Joseph CW C6
St. Lawrence CX C6
St. Mary's CY C6
St. Patrick CZ C6
St. Vincent CA C6
St. Joseph CB C6
St. Lawrence CC C6
St. Mary's CD C6
St. Patrick CE C6
St. Vincent CF C6
St. Joseph CG C6
St. Lawrence CH C6
St. Mary's CI C6
St. Patrick CJ C6
St. Vincent CK C6
St. Joseph CL C6
St. Lawrence CM C6
St. Mary's CN C6
St. Patrick CO C6
St. Vincent CP C6
St. Joseph CQ C6
St. Lawrence CR C6
St. Mary's CS C6
St. Patrick CU C6
St. Vincent CV C6
St. Joseph CW C6
St. Lawrence CX C6
St. Mary's CY C6
St. Patrick CZ C6
St. Vincent CA C6
St. Joseph CB C6
St. Lawrence CC C6
St. Mary's CD C6
St. Patrick CE C6
St. Vincent CF C6
St. Joseph CG C6
St. Lawrence CH C6
St. Mary's CI C6
St. Patrick CJ C6
St. Vincent CK C6
St. Joseph CL C6
St. Lawrence CM C6
St. Mary's CN C6
St. Patrick CO C6
St. Vincent CP C6
St. Joseph CQ C6
St. Lawrence CR C6
St. Mary's CS C6
St. Patrick CU C6
St. Vincent CV C6
St. Joseph CW C6
St. Lawrence CX C6
St. Mary's CY C6
St. Patrick CZ C6
St. Vincent CA C6
St. Joseph CB C6
St. Lawrence CC C6
St. Mary's CD C6
St. Patrick CE C6
St. Vincent CF C6
St. Joseph CG C6
St. Lawrence CH C6
St. Mary's CI C6
St. Patrick CJ C6
St. Vincent CK C6
St. Joseph CL C6
St. Lawrence CM C6
St. Mary's CN C6
St. Patrick CO C6
St. Vincent CP C6
St. Joseph CQ C6
St. Lawrence CR C6
St. Mary's CS C6
St. Patrick CU C6
St. Vincent CV C6
St. Joseph CW C6
St. Lawrence CX C6
St. Mary's CY C6
St. Patrick CZ C6
St. Vincent CA C6
St. Joseph CB C6
St. Lawrence CC C6
St. Mary's CD C6
St. Patrick CE C6
St. Vincent CF C6
St. Joseph CG C6
St. Lawrence CH C6
St. Mary's CI C6
St. Patrick CJ C6
St. Vincent CK C6
St. Joseph CL C6
St. Lawrence CM C6
St. Mary's CN C6
St. Patrick CO C6
St. Vincent CP C6
St. Joseph CQ C6
St. Lawrence CR C6
St. Mary's CS C6
St. Patrick CU C6
St. Vincent CV C6
St. Joseph CW C6
St. Lawrence CX C6
St. Mary's CY C6
St. Patrick CZ C6
St. Vincent CA C6
St. Joseph CB C6
St. Lawrence CC C6
St. Mary's CD C6
St. Patrick CE C6
St. Vincent CF C6
St. Joseph CG C6
St. Lawrence CH C6
St. Mary's CI C6
St. Patrick CJ C6
St. Vincent CK C6
St. Joseph CL C6
St. Lawrence CM C6
St. Mary's CN C6
St. Patrick CO C6
St. Vincent CP C6
St. Joseph CQ C6
St. Lawrence CR C6
St. Mary's CS C6
St. Patrick CU C6
St. Vincent CV C6
St. Joseph CW C6
St. Lawrence CX C6
St. Mary's CY C6
St. Patrick CZ C6
St. Vincent CA C6
St. Joseph CB C6
St. Lawrence CC C6
St. Mary's CD C6
St. Patrick CE C6
St. Vincent CF C6
St. Joseph CG C6
St. Lawrence CH C6
St. Mary's CI C6
St. Patrick CJ C6
St. Vincent CK C6
St. Joseph CL C6
St. Lawrence CM C6
St. Mary's CN C6
St. Patrick CO C6
St. Vincent CP C6
St. Joseph CQ C6
St. Lawrence CR C6
St. Mary's CS C6
St. Patrick CU C6
St. Vincent CV C6
St. Joseph CW C6
St. Lawrence CX C6
St. Mary's CY C6
St. Patrick CZ C6
St. Vincent CA C6
St. Joseph CB C6
St. Lawrence CC C6
St. Mary's CD C6
St. Patrick CE C6
St. Vincent CF C6
St. Joseph CG C6
St. Lawrence CH C6
St. Mary's CI C6
St. Patrick CJ C6
St. Vincent CK C6
St. Joseph CL C6
St. Lawrence CM C6
St. Mary's CN C6
St. Patrick CO C6
St. Vincent CP C6
St. Joseph CQ C6
St. Lawrence CR C6
St. Mary's CS C6
St. Patrick CU C6
St. Vincent CV C6
St. Joseph CW C6
St. Lawrence CX C6
St. Mary's CY C6
St. Patrick CZ C6
St. Vincent CA C6
St. Joseph CB C6
St. Lawrence CC C6
St. Mary's CD C6
St. Patrick CE C6
St. Vincent CF C6
St. Joseph CG C6
St. Lawrence CH C6
St. Mary's CI C6
St. Patrick CJ C6
St. Vincent CK C6
St. Joseph CL C6
St. Lawrence CM C6
St. Mary's CN C6
St. Patrick CO C6
St. Vincent CP C6
St. Joseph CQ C6
St. Lawrence CR C6
St. Mary's CS C6
St. Patrick CU C6
St. Vincent CV C6
St. Joseph CW C6
St. Lawrence CX C6
St. Mary's CY C6
St. Patrick CZ C6
St. Vincent CA C6
St. Joseph CB C6
St. Lawrence CC C6
St. Mary's CD C6
St. Patrick CE C6
St. Vincent CF C6
St. Joseph CG C6
St. Lawrence CH C6
St. Mary's CI C6
St. Patrick CJ C6
St. Vincent CK C6
St. Joseph CL C6
St. Lawrence CM C6
St. Mary's CN C6
St. Patrick CO C6
St. Vincent CP C6
St. Joseph CQ C6
St. Lawrence CR C6
St. Mary's CS C6
St. Patrick CU C6
St. Vincent CV C6
St. Joseph CW C6
St. Lawrence CX C6
St. Mary's CY C6
St. Patrick CZ C6
St. Vincent CA C6
St. Joseph CB C6
St. Lawrence CC C6
St. Mary's CD C6
St. Patrick CE C6
St. Vincent CF C6
St. Joseph CG C6
St. Lawrence CH C6
St. Mary's CI C6
St. Patrick CJ C6
St. Vincent CK C6
St. Joseph CL C6
St. Lawrence CM C6
St. Mary's CN C6
St. Patrick CO C6
St. Vincent CP C6
St. Joseph CQ C6
St. Lawrence CR C6
St. Mary's CS C6
St. Patrick CU C6
St. Vincent CV C6
St. Joseph CW C6
St. Lawrence CX C6
St. Mary's CY C6
St. Patrick CZ C6
St. Vincent CA C6
St. Joseph CB C6
St. Lawrence CC C6
St. Mary's CD C6
St. Patrick CE C6
St. Vincent CF C6
St. Joseph CG C6
St. Lawrence CH C6
St. Mary's CI C6
St. Patrick CJ C6
St. Vincent CK C6
St. Joseph CL C6
St. Lawrence CM C6
St. Mary's CN C6
St. Patrick CO C6
St. Vincent CP C6
St. Joseph CQ C6
St. Lawrence CR C6
St. Mary's CS C6
St. Patrick CU C6
St. Vincent CV C6
St. Joseph CW C6
St. Lawrence CX C6
St. Mary's CY C6
St. Patrick CZ C6
St. Vincent CA C6
St. Joseph CB C6
St. Lawrence CC C6
St. Mary's CD C6
St. Patrick CE C6
St. Vincent CF C6
St. Joseph CG C6
St. Lawrence CH C6
St. Mary's CI C6
St. Patrick CJ C6
St. Vincent CK C6
St. Joseph CL C6
St. Lawrence CM C6
St. Mary's CN C6
St. Patrick CO C6
St. Vincent CP C6
St. Joseph CQ C6
St. Lawrence CR C6
St. Mary's CS C6
St. Patrick CU C6
St. Vincent CV C6
St. Joseph CW C6
St. Lawrence CX C6
St. Mary's CY C6
St. Patrick CZ C6
St. Vincent CA C6
St. Joseph CB C6
St. Lawrence CC C6
St. Mary's CD C6
St. Patrick CE C6
St. Vincent CF C6
St. Joseph CG C6
St. Lawrence CH C6
St. Mary's CI C6
St. Patrick CJ C6
St. Vincent CK C6
St. Joseph CL C6
St. Lawrence CM C6
St. Mary's CN C6
St. Patrick CO C6
St. Vincent CP C6
St. Joseph CQ C6
St. Lawrence CR C6
St. Mary's CS C6
St. Patrick CU C6
St. Vincent CV C6
St. Joseph CW C6
St. Lawrence CX C6
St. Mary's CY C6
St. Patrick CZ C6
St. Vincent CA C6
St. Joseph CB C6
St. Lawrence CC C6
St. Mary's CD C6
St. Patrick CE C6
St. Vincent CF C6
St. Joseph CG C6
St. Lawrence CH C6
St. Mary's CI C6
St. Patrick CJ C6
St. Vincent CK C6
St. Joseph CL C6
St. Lawrence CM C6
St. Mary's CN C6
St. Patrick CO C6
St. Vincent CP C6
St. Joseph CQ C6
St. Lawrence CR C6
St. Mary's CS C6
St. Patrick CU C6
St. Vincent CV C6
St. Joseph CW C6
St. Lawrence CX C6
St. Mary's CY C6
St. Patrick CZ C6
St. Vincent CA C6
St. Joseph CB C6
St. Lawrence CC C6
St. Mary's CD C6
St. Patrick CE C6
St. Vincent CF C6
St. Joseph CG C6
St. Lawrence CH C6
St. Mary's CI C6
St. Patrick CJ C6
St. Vincent CK C6
St. Joseph CL C6
St. Lawrence CM C6
St. Mary's CN C6
St. Patrick CO C6
St. Vincent CP C6
St. Joseph CQ C6
St. Lawrence CR C6
St. Mary's CS C6
St. Patrick CU C6
St. Vincent CV C6
St. Joseph CW C6
St. Lawrence CX C6
St. Mary's CY C6
St. Patrick CZ C6
St. Vincent CA C6
St. Joseph CB C6
St. Lawrence CC C6
St. Mary's CD C6
St. Patrick CE C6
St. Vincent CF C6
St. Joseph CG C6
St. Lawrence CH C6
St. Mary's CI C6
St. Patrick CJ C6
St. Vincent CK C6
St. Joseph CL C6
St. Lawrence CM C6
St. Mary's CN C6
St. Patrick CO C6
St. Vincent CP C6
St. Joseph CQ C6
St. Lawrence CR C6
St. Mary's CS C6
St. Patrick CU C6
St. Vincent CV C6
St. Joseph CW C6
St. Lawrence CX C6
St. Mary's CY C6
St. Patrick CZ C6
St. Vincent CA C6
St. Joseph CB C6
St. Lawrence CC C6
St. Mary's CD C6
St. Patrick CE C6
St. Vincent CF C6
St. Joseph CG C6
St. Lawrence CH C6
St. Mary's CI C6
St. Patrick CJ C6
St. Vincent CK C6
St. Joseph CL C6
St. Lawrence CM C6
St. Mary's CN C6
St. Patrick CO C6
St. Vincent CP C6
St. Joseph CQ C6
St. Lawrence CR C6
St. Mary's CS C6
St. Patrick CU C6
St. Vincent CV C6
St. Joseph CW C6
St. Lawrence CX C6
St. Mary's CY C6
St. Patrick CZ C6
St. Vincent CA C6
St. Joseph CB C6
St. Lawrence CC C6
St. Mary's CD C6
St. Patrick CE C6
St. Vincent CF C6
St. Joseph CG C6
St. Lawrence CH C6
St. Mary's CI C6
St. Patrick CJ C6
St. Vincent CK C6
St. Joseph CL C6
St. Lawrence CM C6
St. Mary's CN C6
St. Patrick CO C6
St. Vincent CP C6
St. Joseph CQ C6
St. Lawrence CR C6
St. Mary's CS C6
St. Patrick CU C6
St. Vincent CV C6
St. Joseph CW C6
St. Lawrence CX C6
St. Mary's CY C6
St. Patrick CZ C6
St. Vincent CA C6
St. Joseph CB C6
St. Lawrence CC C6
St. Mary's CD C6
St. Patrick CE C6
St. Vincent CF C6
St. Joseph CG C6
St. Lawrence CH C6
St. Mary's CI C6
St. Patrick CJ C6
St. Vincent CK C6
St. Joseph CL C6
St. Lawrence CM C6
St. Mary's CN C6
St. Patrick CO C6
St. Vincent CP C6
St. Joseph CQ C6
St. Lawrence CR C6
St. Mary's CS C6
St. Patrick CU C6
St. Vincent CV C6
St. Joseph CW C6
St. Lawrence CX C6
St. Mary's CY C6
St. Patrick CZ C6
St. Vincent CA C6
St. Joseph CB C6
St. Lawrence CC C6
St. Mary's CD C6
St. Patrick CE C6
St. Vincent CF C6
St. Joseph CG C6
St. Lawrence CH C6
St. Mary's CI C6
St. Patrick CJ C6
St. Vincent CK C6
St. Joseph CL C6
St. Lawrence CM C6
St. Mary's CN C6
St. Patrick CO C6
St.



FARES / TARIFS

Fares change by time of day and by type of route. The fare for each route is displayed in the front window of the bus.
Drivers do not sell tickets or make change.
Fares can be paid by cash, ticket or monthly pass.
The tariffs changent selon l'heure de la journée et le type de circuit.
Le tarif de chaque circuit apparaît au pare-brise de l'autobus.
Les chauffeurs ne vendent pas de billets et ne font pas la monnaie.
Le passage peut être payé comptant, avec un billet ou une carte d'abonnement mensuelle.

FARES EFFECTIVE JANUARY 1 UNTIL DECEMBER 31, 1991

- All routes numbered 120 to 199: 95¢
- Red and black routes numbered 1 to 119: Monday to Friday, 6 AM - 8:30 AM and 3 PM - 5:30 PM: \$ 1.00
- All other times: 95¢
- Green Routes numbered 1 to 119: Monday to Friday, 6 AM - 8:30 AM and 3 PM - 5:30 PM: \$ 1.00
- All other times: 95¢

TARIF EN VIGUEUR LE 1^{er} JANVIER JUSQU'AU 31 DÉCEMBRE 1991

- Les circuits numérotés de 120 à 199: 0,95 \$
- Les circuits rouges et noirs, numérotés de 1 à 119: le lundi au vendredi, de 6 h à 8 h 30 et de 15 h à 17 h 30: \$ 1,00
- à toute autre période: 0,95 \$
- Les circuits verts, numérotés de 1 à 119: le lundi au vendredi, de 6 h à 8 h 30 et de 15 h à 17 h 30: \$ 1,00
- à toute autre période: 0,95 \$

Passes / Cartes d'abonnement

Tickets and passes can be purchased at one of our public offices (see map) or at many other retail locations throughout Ottawa-Carleton.

Discount Fares / Tarifs réduits

Senior Citizens / Aînés
Senior citizens aged 65 years of age and over, with acceptable proof of age, pay 95¢ on all routes at all times. Reduced fare passes are also available for seniors.
Place justificative à l'appui, les personnes âgées de 65 ans et plus versent un tarif de 0,95 \$ sur tous les circuits, en tout temps. Les aînés peuvent aussi se procurer une carte d'abonnement à tarif réduit.

Students / Étudiants

Students in full-time attendance at elementary, secondary or post-secondary schools in Ottawa-Carleton are also entitled to reduced-fare monthly passes. Phone 741-4390 for details.
Les étudiants à temps plein des écoles élémentaires, secondaires ou post-secondaires d'Ottawa-Carleton peuvent aussi se procurer une carte d'abonnement mensuelle à prix réduit. Renseignements: 741-4390

Children / Enfants

Children 5 years and under, travel free when accompanied by an adult.
Le passage est gratuit pour les enfants de 5 ans et moins, accompagnés d'un adulte.

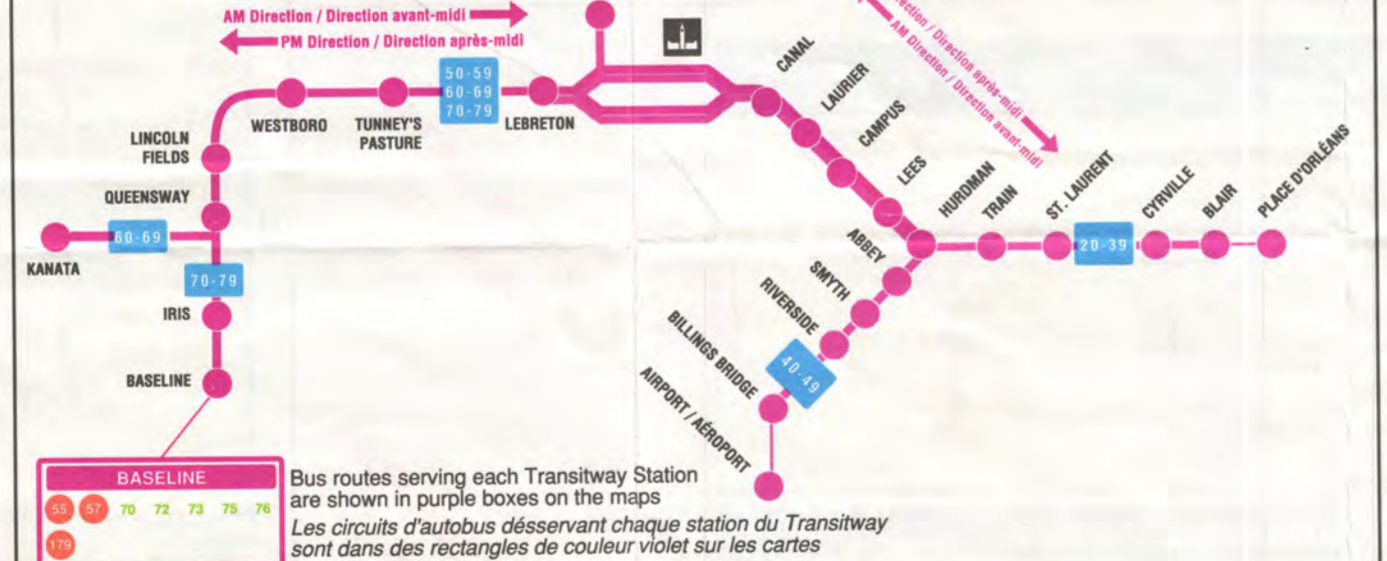
POP / PdP

POP - Proof of Payment: On articulated buses, passengers are permitted to board by rear doors if they have already paid the correct fare for that trip.
PdP - Preuve de paiement: Les passagers peuvent monter à bord des autobus articulés par les portes arrière, s'ils ont versé le tarif qu'exige ce trajet.
Passengers paying cash or using tickets must board at the front, and obtain a transfer/receipt as proof of payment from the driver.
Les passagers payant en espèces ou en utilisant des billets doivent monter par l'avant et obtenir, du chauffeur, une correspondance - reçu comme preuve de paiement.

POP - Preuve de paiement: Les passagers peuvent monter à bord des autobus articulés par les portes arrière, s'ils ont versé le tarif qu'exige ce trajet.

THE TRANSITWAY / LE TRANSITWAY

The Transitway is an exclusive bus corridor providing rapid transit service across the Ottawa-Carleton region. Rush hour routes 20 to 82 use the Transitway to and from downtown.
Le transitway, au moyen de couloirs d'autobus réservés, fournit un service de transport urbain rapide à travers la région d'Ottawa-Carleton. Les circuits de pointe 20 à 82 utilisent le transitway à partir et vers le centre-ville.



SCHEDULES / HORAIRES

Regular routes / Black numbers
7 days per week, 6 AM to midnight (except where noted).

Rush hour routes / Red and Green numbers
Monday to Friday
AM peak period (6-9 AM)
PM peak period (3-6 PM)

Circuits réguliers / Chiffres noirs
7 jours par semaine, de 6 h à minuit (sauf les exceptions).

Circuits de pointe / Chiffres rouges et verts
Lundi au vendredi
Pointe du matin (6h à 9h)
Pointe de l'après-midi (15h à 18h)

To Get Schedule Information For Your Route
Check your bus stop number. Then dial 560 + this 4 digit number. Our computer will automatically tell you the scheduled departure times for each route at your stop.

Renseignements sur l'horaire de votre circuit
Vérifiez le numéro d'arrêt d'autobus et composez le 560 + les 4 chiffres du numéro. Un message informatisé vous dira automatiquement l'heure prévue d'arrivée de l'autobus de chacun des circuits attachés à l'arrêt.

STREETS WITH OC TRANSPO SERVICE / RUES DÉSERVIES PAR OC TRANSPO

A Abbeyhill A7	B Banner Banning B3	C Carling C1	D Dufferin D1	E Eastview E1	F Fallowfield F1	G Garden Way G1	H Hallowell H1	I Industrial I1	J Jeanne d'Arc J1	K Kakulu K1	L Lacasse L1	M MacFarlane M1	N Nepean N1	O O'Connor O1	P Palomino P1	Q Queen Mary Q1	R Ramsay R1	S Sandilwood S1	T Tallwood T1	U Uplands U1	V Vanier V1	W Watley W1	X Xenopus X1	Y Young Y1	Z Zephyrus Z1
-----------------------	----------------------------	---------------------	----------------------	----------------------	-------------------------	------------------------	-----------------------	------------------------	--------------------------	--------------------	---------------------	------------------------	--------------------	----------------------	----------------------	------------------------	--------------------	------------------------	----------------------	---------------------	--------------------	--------------------	---------------------	-------------------	----------------------

DOWNTOWN / CENTRE-VILLE



A Albert A1	B Baseline B1	C Carleton C1	D Dufferin D1	E Eastview E1	F Fallowfield F1	G Garden Way G1	H Hallowell H1	I Industrial I1	J Jeanne d'Arc J1	K Kakulu K1	L Lacasse L1	M MacFarlane M1	N Nepean N1	O O'Connor O1	P Palomino P1	Q Queen Mary Q1	R Ramsay R1	S Sandilwood S1	T Tallwood T1	U Uplands U1	V Vanier V1	W Watley W1	X Xenopus X1	Y Young Y1	Z Zephyrus Z1
--------------------	----------------------	----------------------	----------------------	----------------------	-------------------------	------------------------	-----------------------	------------------------	--------------------------	--------------------	---------------------	------------------------	--------------------	----------------------	----------------------	------------------------	--------------------	------------------------	----------------------	---------------------	--------------------	--------------------	---------------------	-------------------	----------------------

Information

741-4390
OC Transpo Telephone Information Centre is open Monday to Saturday from 6 AM to 11 PM and Sunday from 8 AM to 11 PM.
Or write to: OC Transpo, Public Information, 1500 St. Laurent Blvd., Ottawa, Ont. K1G 0Z8.

Lost and Found

563-4011
Lost and Found is located at 294 Albert Street and is open from 8:30 AM to 5 PM weekdays. Dial 563-4011.

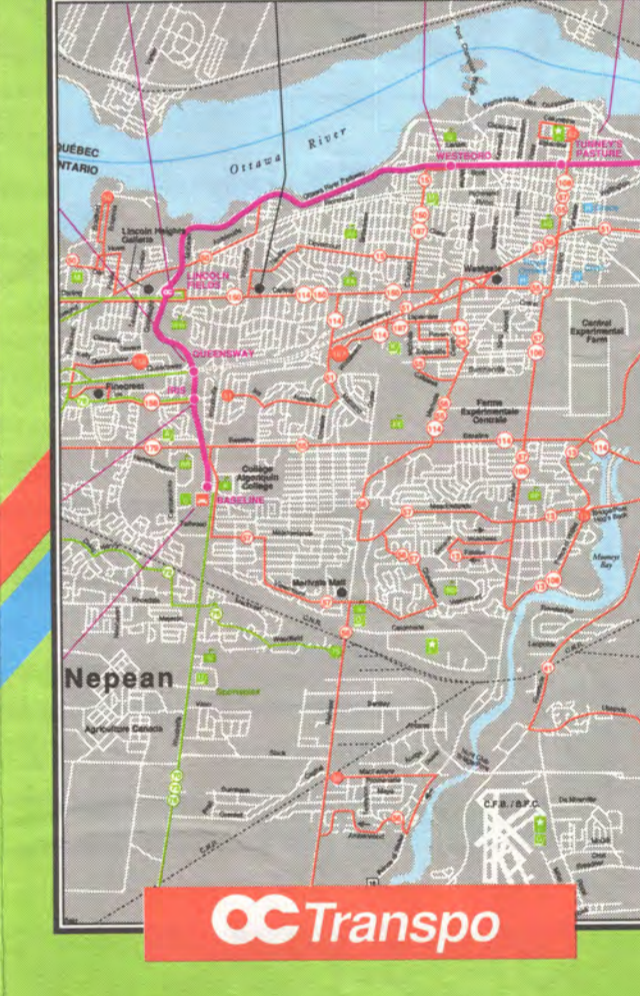
Customer Service

748-4408
Customer Service handles complaints, suggestions and compliments, weekdays from 8 AM to 5 PM. (Please note route number, direction, date, time and bus #.) Dial 748-4408 or write to: OC Transpo, Customer Service, 1500 St. Laurent Blvd., Ottawa, Ontario K1G 0Z8.

SYSTEM MAP / CARTE RÉSEAU

Map 1 - Regular Routes
Map 2 - Peak Period Routes
Map 3 - Circuits réguliers
Map 4 - Circuits de pointe

June • Juin 1991



OC Transpo

Information

741-4390
Le Centre d'information d'OC Transpo peut être rejoint du lundi au samedi de 6 h à 23 h et le dimanche de 8 h à 23 h au 741-4390.
On écrivez au Centre d'information, OC Transpo, 1500 boul. St-Laurent, Ottawa, Ontario K1G 0Z8.

Objets perdus et retrouvés

563-4011
Le service des objets perdus et retrouvés est situé au 294, rue Albert, et est ouvert sur semaine entre 8 h 30 et 17 h 00. Composez 563-4011.

Service aux clients

748-4408
Le service aux clients reçoit plaintes, suggestions et compliments en semaine de 8 h à 17 h. (Veuillez noter le numéro du circuit, la direction, la date, l'heure, et le numéro d'autobus.) Signalez 748-4408 ou écrivez à: OC Transpo, Service aux clients, 1500 boul. St-Laurent, Ottawa, Ontario K1G 0Z8.